



YOUNG CYCLE



# *Professional Metal Letter Punch & Number Stamps Manufacturer*

Metal Stamp Punch Factory of Taiwan

[www.youngcycle.com.tw](http://www.youngcycle.com.tw)



## Company Profile

# Professional Manufacture Steel Stamp Metal Stamp Punch Factory in Taiwan

Young Cycle was established in 1986. Our company is a professional manufacturer of steel stamp/ metal stamp punches and is popular in the steel stamp market in Taiwan.

We demands ourself to meet and retain the best quality of our products.

Young Cycle welcome domestic and international retailers to be part of our team and promote the market. We will make sure to give you the best support you need throughout our partnership.

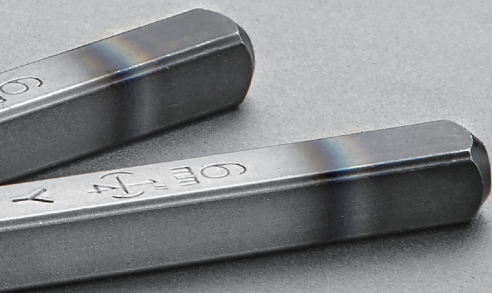
It will be an honor to be working with you.





## Index

- 5 Letter Steel Stamps **YC-601**
- 6 Number Steel Stamps **YC-602**
- 7 German Letter Steel Stamps **YC-614**
- 8 German Number Steel Stamps **YC-615**
- 9 Heavy- Duty Letter Steel Stamps **YC-603**
- 10 Heavy- Duty Number Steel Stamps **YC-604**
- 11 German Letter Steel Stamps **GL**
- 12 German Number Steel Stamps **GN**
- 13 Letter Steel Stamps **EL**
- 14 Number Steel Stamps **EN**
- 15 Combination Steel Stamps **YC-607**
- 16 Lowercase Letter Steel Stamps **YC-616**
- 17 Round-Dotted Steel Stamps(LOW-STRESS DOT STYLE) **YC-609**
- 18 Sharp-Dotted Steel Stamps(LOW-STRESS DOT STYLE) **YC-609B**
- 19 Flat Face Steel Stamps **YC-613**
- 20 Pattern Steel Stamps **YC-612**
- 21 Reversed Letter Steel Stamps **YC-605**
- 22 Reversed Number Steel Stamps **YC-606**
- 23 Reversed German Letter Steel Stamps **YC-617**
- 24 Reversed German Number Steel Stamps **YC-618**
- 25 Steel Types and Type Holders **YC-610**
- 26 Screw Extractor Set **YC-701**
- 26 Automatic Center Punch **YC-702**





Dulling and Chip Resistant for Enduring Sharpness.

HRC 58° - 62°

Lateral Bevel.

Engraved Measurements.

Precision Machined Shank.

Tempering Tail-end.

HRC 38° - 46°



Non-tempered End

Continued use may cause safety and durability issues

Properly **Tempered** End

- Dulling and Chip Resistant for Enduring Sharpness.
- Easy to Use Precision Machined Shank.
- Tempering Tail-end Reduces Recoil.
- Tempering Tail-end Increase Durability and Longevity.



Perfect horizontal  
alignment to the workpiece

Visible window for  
easy positioning.

### Multifunctional Storage Case

- Easy falling stamp Perfect Punching Vertical.
- Stamping with the case, work efficiency and safety.
- No directional restrictions, 360-degree transformation according to user habits.





- Alphabet steel stamp set : 27 pieces includes A-Z, symbol &.
- Surface treatment: Sandblasting.
- Hardness: Front font HRC 58-62 degrees.  
Tail-end tempering HRC 38-46 degrees.
- Marked with character and size on the thumb side.
- Each stamp is double-beveled face for easy sighting.
- Each set packed in a PP plastic case.
- Material: CR-V (6150).



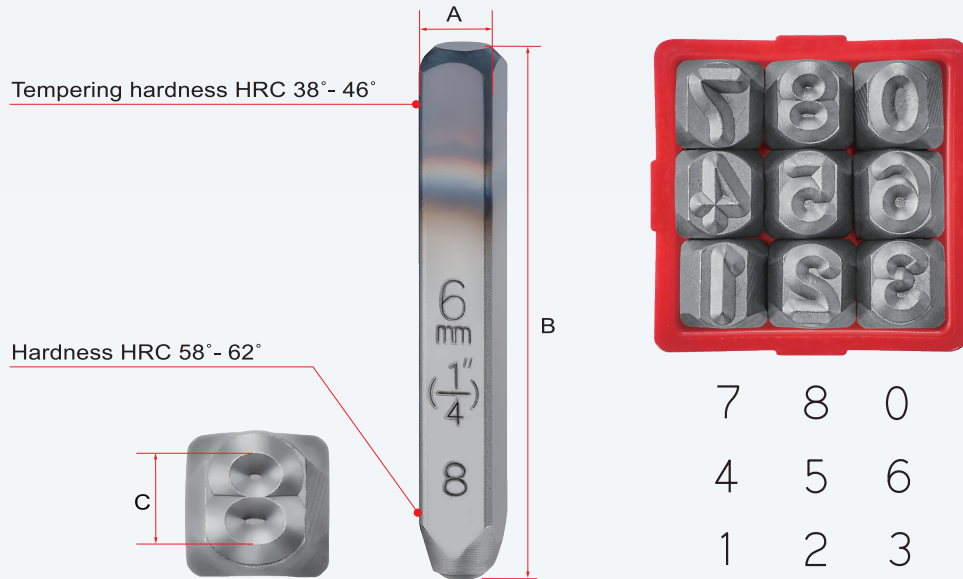
### SPECIFICATION

Item No.	Character Size C	Shank Size Square A	Shank Size Length (±0.4) B	Standard Pack Quantity
YC601-1	1.0mm(3/64")	6.35mm	62mm	30 Sets/CTN
YC601-1.5	1.5mm(1/16")	6.35mm	62mm	30 Sets/CTN
YC601-2	2.0mm(5/64")	6.35mm	61mm	30 Sets/CTN
YC601-2.5	2.5mm(3/32")	6.35mm	61mm	30 Sets/CTN
YC601-3	3.0mm (1/8")	6.35mm	60mm	30 Sets/CTN
YC601-4	4.0mm (5/32")	6.35mm	60mm	30 Sets/CTN
YC601-5	5.0mm (3/16")	7.93mm	61mm	16 Sets/CTN
YC601S-6	6.0mm (1/4")	7.93mm	60mm	16 Sets/CTN
YC601-6	6.0mm (1/4")	9.52mm	67mm	12 Sets/CTN
YC601-7	7.0mm (9/32")	11.11mm	68mm	8 Sets/CTN
YC601S-8	8.0mm (5/16")	11.11mm	67mm	8 Sets/CTN
YC601-8	8.0mm (5/16")	12.70mm	70mm	6 Sets/CTN
YC601-10	10.0mm (3/8")	12.70mm	71mm	6 Sets/CTN
YC601-12	12.0mm (1/2")	15.85mm	83mm	4 Sets/CTN
YC601-16	16.0mm (5/8")	15.85mm	95mm	2 Sets/CTN
YC601-19	19.0mm (3/4")	19.05mm	98mm	2 Sets/CTN


⊙ Blow Mold Case (BMC)




- Number steel stamp set: 9 pieces includes 0-8 (6 is used as 9 when upside-down).
- Surface Treatment: Sandblasting.
- Hardness: Front font HRC 58-62 degrees.  
Tail-end tempering HRC 38-46 degrees.
- Marked with character and size on the thumb side.
- Each stamp is double-beveled face for easy sighting.
- Each set packed in a PP plastic case.
- Material: CR-V (6150).

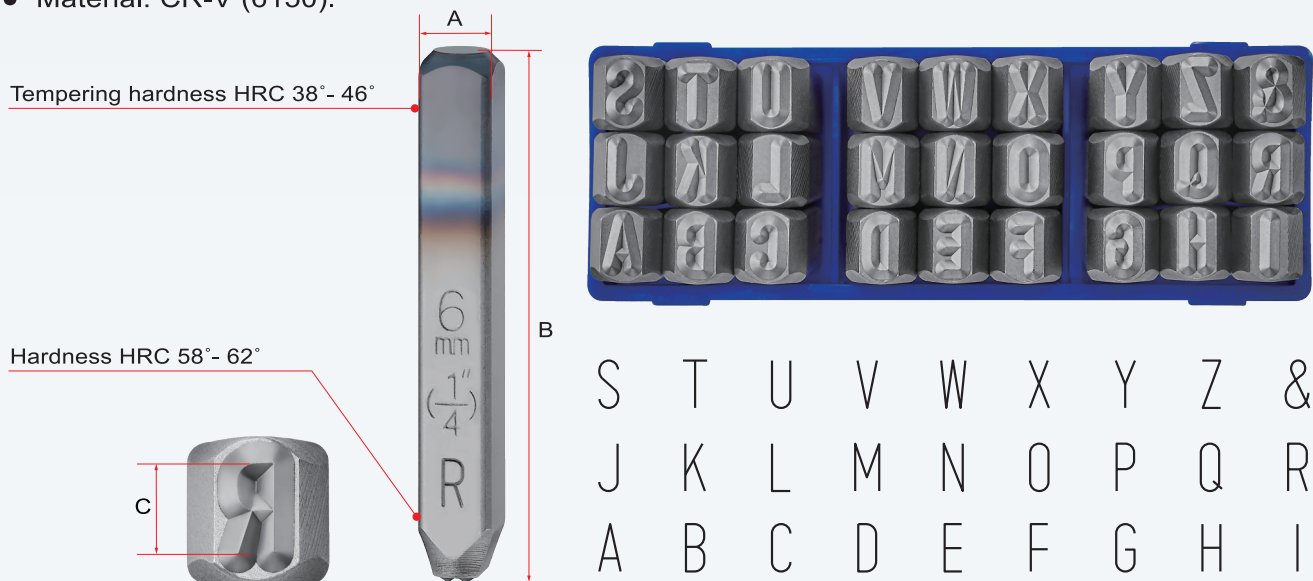


### SPECIFICATION

Item No.	Character Size <b>C</b>	Shank Size Square <b>A</b>	Shank Size Length (±0.4) <b>B</b>	Standard Pack Quantity
YC602-1	1.0mm(3/64")	6.35mm	62mm	80 Sets/CTN
YC602-1.5	1.5mm(1/16")	6.35mm	62mm	80 Sets/CTN
YC602-2	2.0mm(5/64")	6.35mm	61mm	80 Sets/CTN
YC602-2.5	2.5mm(3/32")	6.35mm	61mm	80 Sets/CTN
YC602-3	3.0mm (1/8")	6.35mm	60mm	80 Sets/CTN
YC602-4	4.0mm (5/32")	6.35mm	60mm	80 Sets/CTN
YC602-5	5.0mm (3/16")	7.93mm	61mm	50 Sets/CTN
YC602S-6	6.0mm (1/4")	7.93mm	60mm	50 Sets/CTN
YC602-6	6.0mm (1/4")	9.52mm	67mm	36 Sets/CTN
YC602-7	7.0mm (9/32")	11.11mm	68mm	24 Sets/CTN
YC602S-8	8.0mm (5/16")	11.11mm	67mm	24 Sets/CTN
YC602-8	8.0mm (5/16")	12.70mm	70mm	18 Sets/CTN
YC602-10	10.0mm (3/8")	12.70mm	71mm	18 Sets/CTN
YC602-12	12.0mm (1/2")	15.85mm	83mm	10 Sets/CTN
YC602-16	16.0mm (5/8")	15.85mm	95mm	6 Sets/CTN 
YC602-19	19.0mm (3/4")	19.05mm	98mm	6 Sets/CTN 

 Blow Mold Case (BMC)

- Alphabet steel stamp set: 27 pieces includes A-Z, symbol &.
- Surface treatment: Sandblasting.
- Hardness: Front font HRC 58-62 degrees.  
Tail-end tempering HRC 38-46 degrees.
- Marked with character and size on the thumb side.
- Each stamp is double-beveled face for easy sighting.
- Each set packed in a PP plastic case.
- Typeface according to DIN 1451.
- Material: CR-V (6150).



### SPECIFICATION

Item No.	Character Size <b>C</b>	Shank Size Square <b>A</b>	Shank Size Length (±0.4) <b>B</b>	Standard Pack Quantity
YC614-1.5	1.5mm(1/16")	6.35mm	61mm	30 Sets/CTN
YC614-2	2.0mm(5/64")	6.35mm	61mm	30 Sets/CTN
YC614-2.5	2.5mm(3/32")	6.35mm	61mm	30 Sets/CTN
YC614-3	3.0mm (1/8")	6.35mm	60mm	30 Sets/CTN
YC614S-4	4.0mm (5/32")	6.35mm	60mm	30 Sets/CTN
YC614-4	4.0mm (5/32")	7.93mm	63mm	16 Sets/CTN
YC614-5	5.0mm (3/16")	7.93mm	61mm	16 Sets/CTN
YC614S-6	6.0mm (1/4")	7.93mm	61mm	16 Sets/CTN
YC614-6	6.0mm (1/4")	9.52mm	68mm	12 Sets/CTN
YC614-7	7.0mm (9/32")	11.11mm	68mm	8 Sets/CTN
YC614S-8	8.0mm (5/16")	11.11mm	68mm	8 Sets/CTN
YC614-8	8.0mm (5/16")	12.70mm	70mm	6 Sets/CTN
YC614-10	10.0mm (3/8")	12.70mm	74mm	6 Sets/CTN
YC614-12	12.0mm (1/2")	15.85mm	84mm	4 Sets/CTN
YC614-16	16.0mm (5/8")	15.85mm	96mm	2 Sets/CTN
YC614-19	19.0mm (3/4")	19.05mm	98mm	2 Sets/CTN

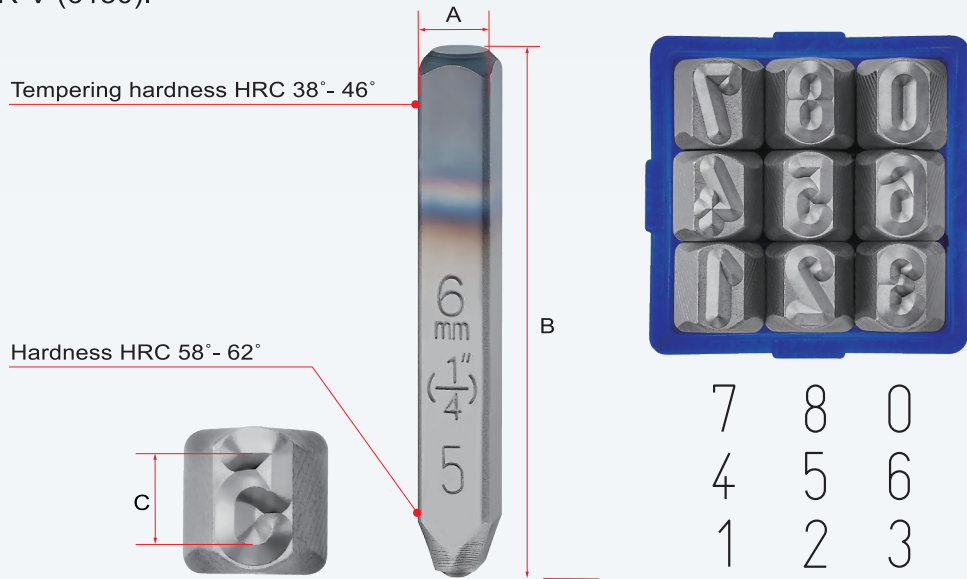
⊙ Blow Mold Case (BMC)



# YC-615

## German Number Steel Stamps

- Number steel stamp set: 9 pieces includes 0-8 (6 is used as 9 when upside-down).
- Surface Treatment: Sandblasting.
- Hardness: Front font HRC 58-62 degrees.  
Tail-end tempering HRC 38-46 degrees.
- Marked with character and size on the thumb side.
- Each stamp is double-beveled face for easy sighting.
- Each set packed in a PP plastic case.
- Typeface according to DIN 1451.
- Material: CR-V (6150).

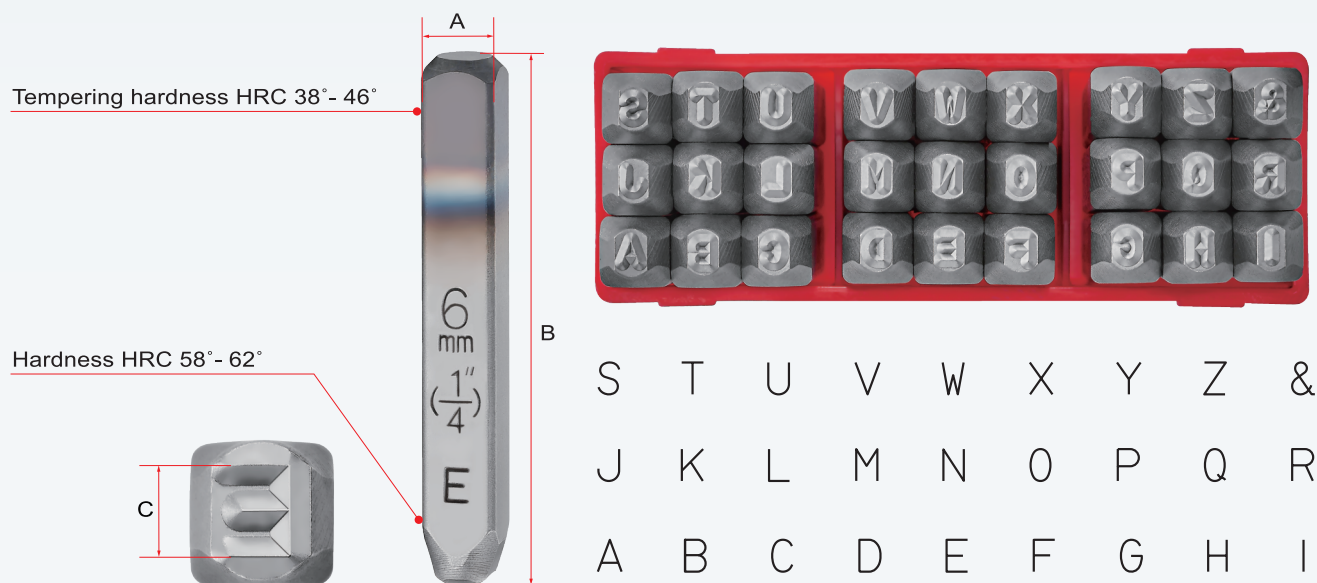


### SPECIFICATION

Item No.	Character Size C	Shank Size Square A	Shank Size Length (±0.4) B	Standard Pack Quantity
YC615-1.5	1.5mm (1/16")	6.35mm	61mm	80 Sets/CTN
YC615-2	2.0mm (5/64")	6.35mm	61mm	80 Sets/CTN
YC615-2.5	2.5mm (3/32")	6.35mm	61mm	80 Sets/CTN
YC615-3	3.0mm (1/8")	6.35mm	60mm	80 Sets/CTN
YC615S-4	4.0mm (5/32")	6.35mm	60mm	80 Sets/CTN
YC615-4	4.0mm (5/32")	7.93mm	63mm	50 Sets/CTN
YC615-5	5.0mm (3/16")	7.93mm	61mm	50 Sets/CTN
YC615S-6	6.0mm (1/4")	7.93mm	61mm	50 Sets/CTN
YC615-6	6.0mm (1/4")	9.52mm	68mm	36 Sets/CTN
YC615-7	7.0mm (9/32")	11.11mm	68mm	24 Sets/CTN
YC615S-8	8.0mm (5/16")	11.11mm	68mm	24 Sets/CTN
YC615-8	8.0mm (5/16")	12.70mm	70mm	18 Sets/CTN
YC615-10	10.0mm (3/8")	12.70mm	74mm	18 Sets/CTN
YC615-12	12.0mm (1/2")	15.85mm	84mm	10 Sets/CTN
YC615-16	16.0mm (5/8")	15.85mm	96mm	6 Sets/CTN ◎
YC615-19	19.0mm (3/4")	19.05mm	98mm	6 Sets/CTN ◎

◎ Blow Mold Case (BMC)

- Alphabet steel stamp Set, 27 Pieces includes A~Z, symbol &.
- Surface treatment: Sandblasting.
- Hardness: Front font HRC 58-62 degrees.  
Tail-end tempering HRC 38-46 degrees.
- Marked with character and size on the thumb side.
- Each stamp is double-beveled face for easy sighting.
- Each set packed in a PP plastic case.
- Material: CR-V (6150).

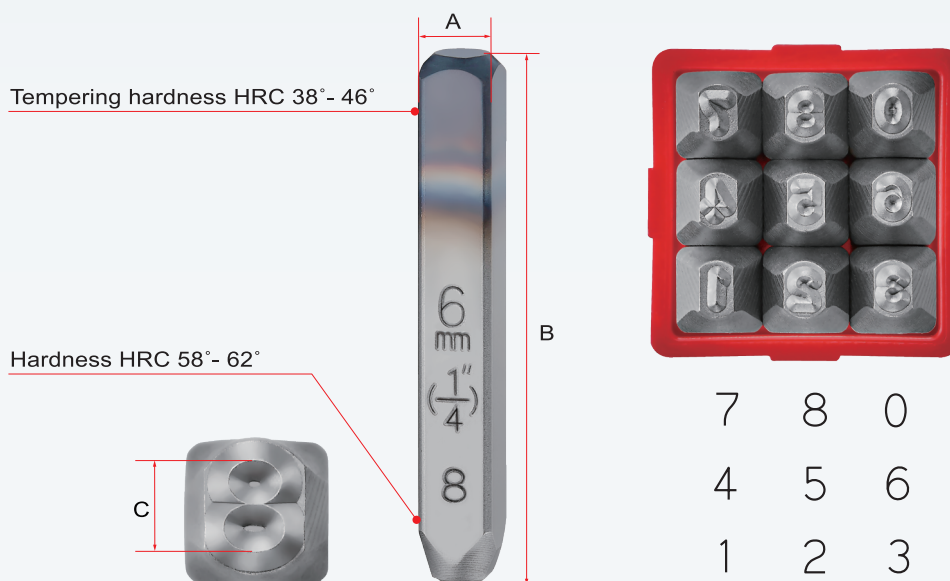


### SPECIFICATION

Item No.	Character Size C	Shank Size Square A	Shank Size Length (±0.4) B	Standard Pack Quantity
YC603L-1.5	1.5mm(1/16")	7.93mm	71mm	16 Sets/CTN
YC603H-2.5	2.5mm (3/32")	7.93mm	64mm	16 Sets/CTN
YC603L-2.5	2.5mm (3/32")	7.93mm	70mm	16 Sets/CTN
YC603H-3	3.0mm (1/8")	7.93mm	64mm	16 Sets/CTN
YC603L-3	3.0mm (1/8")	9.52mm	70mm	12 Sets/CTN
YC603R-3	3.0mm (1/8")	12.70mm	79mm	6 Sets/CTN
YC603L-4	4.0mm(5/32")	9.52mm	70mm	12 Sets/CTN
YC603H-5	5.0mm (3/16")	9.52mm	68mm	12 Sets/CTN
YC603L-5	5.0mm (3/16")	11.11mm	70mm	8 Sets/CTN
YC603H-6	6.0mm (1/4")	11.11mm	76mm	8 Sets/CTN
YC603L-6	6.0mm (1/4")	12.70mm	76mm	6 Sets/CTN
YC603R-6	6.0mm (1/4")	15.85mm	89mm	4 Sets/CTN
YC603H-10	10.0mm (3/8")	14.28mm	81mm	4 Sets/CTN
YC603L-10	10.0mm (3/8")	15.85mm	86mm	4 Sets/CTN



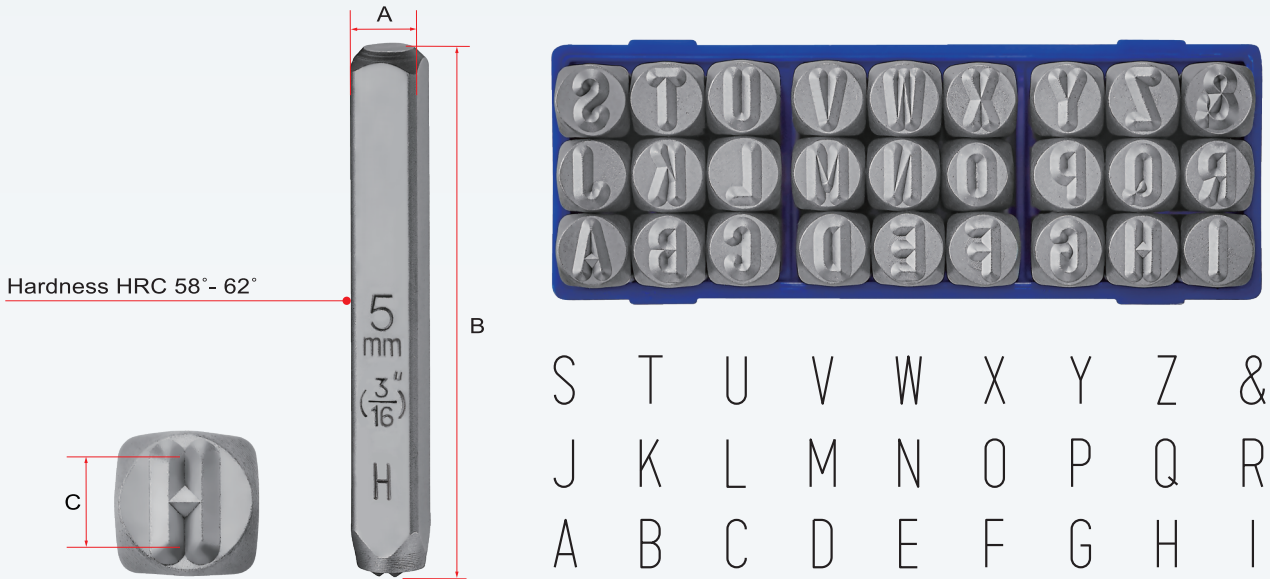
- Number steel stamp set: 9 pieces includes 0-8 (6 is used as 9 when upside-down).
- Surface treatment: Sandblasting.
- Hardness: Front font HRC 58-62 degrees.  
Tail-end tempering HRC 38-46 degrees.
- Marked with character and size on the thumb side.
- Each stamp is double-beveled face for easy sighting.
- Each set packed in a PP plastic case.
- Material: CR-V (6150).



### SPECIFICATION

Item No.	Character Size C	Shank Size Square A	Shank Size Length (±0.4) B	Standard Pack Quantity
YC604L-1.5	1.5mm(1/16")	7.93mm	71mm	50 Sets/CTN
YC604H-2.5	2.5mm (3/32")	7.93mm	64mm	50 Sets/CTN
YC604L-2.5	2.5mm (3/32")	7.93mm	70mm	50 Sets/CTN
YC604H-3	3.0mm (1/8")	7.93mm	64mm	50 Sets/CTN
YC604L-3	3.0mm (1/8")	9.52mm	70mm	36 Sets/CTN
YC604R-3	3.0mm (1/8")	12.70mm	79mm	18 Sets/CTN
YC604L-4	4.0mm(5/32")	9.52mm	70mm	36 Sets/CTN
YC604H-5	5.0mm (3/16")	9.52mm	68mm	36 Sets/CTN
YC604L-5	5.0mm (3/16")	11.11mm	70mm	24 Sets/CTN
YC604H-6	6.0mm (1/4")	11.11mm	76mm	24 Sets/CTN
YC604L-6	6.0mm (1/4")	12.70mm	76mm	18 Sets/CTN
YC604R-6	6.0mm (1/4")	15.85mm	89mm	10 Sets/CTN
YC604H-10	10.0mm (3/8")	14.28mm	81mm	10 Sets/CTN
YC604L-10	10.0mm (3/8")	15.85mm	86mm	10 Sets/CTN

- Alphabet steel stamp set: 27 pieces A-Z including symbol &.
- Surface treatment: Sandblasting.
- Hardness: Front font HRC 58-62 degrees.
- Marked with character and size on the thumb side.
- Each set packed in a PP plastic case.
- Material: CR-V (6150).



## SPECIFICATION

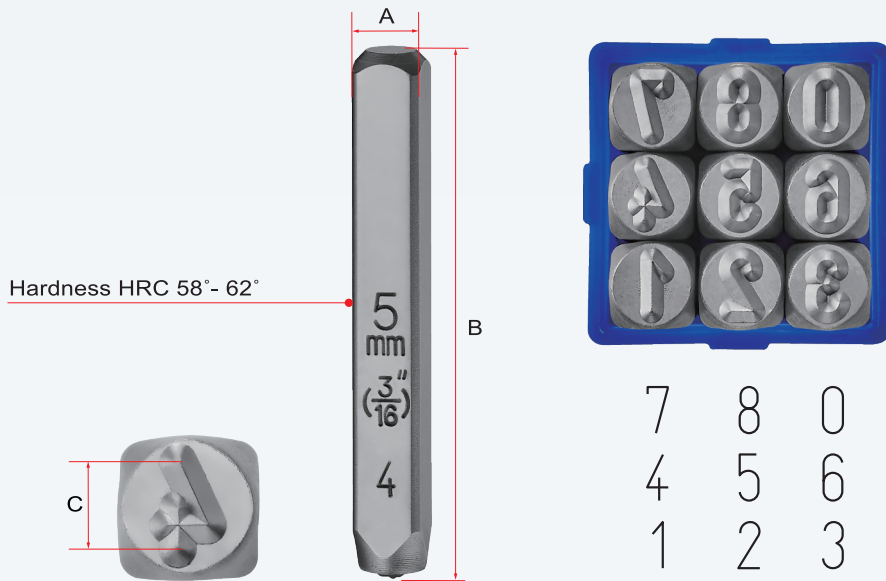
Item No.	Character Size <b>C</b>	Shank Size Square <b>A</b>	Shank Size Length (±0.4) <b>B</b>	Standard Pack Quantity
GL-2	2.0mm(5/64")	6.35mm	61mm	30 Sets/CTN
GL-3	3.0mm (1/8")	6.35mm	61mm	30 Sets/CTN
GL-4	4.0mm (5/32")	6.35mm	60mm	30 Sets/CTN
GL-5	5.0mm (3/16")	7.93mm	60mm	16 Sets/CTN
GL-6	6.0mm (1/4")	7.93mm	60mm	16 Sets/CTN
GL-7	7.0mm (9/32")	9.52mm	67mm	12 Sets/CTN
GL-8	8.0mm (5/16")	11.11mm	68mm	8 Sets/CTN
GL-10	10.0mm (3/8")	12.70mm	70mm	6 Sets/CTN
GL-12	12.0mm (1/2")	14.28mm	79mm	4 Sets/CTN



# GN

## German Number Steel Stamps

- Number steel stamp set: 9 pieces includes 0-8 (6 is used as 9 when upside-down).
- Surface treatment: Sandblasting.
- Hardness: Front font HRC 58-62 degrees.
- Marked with character and size on the thumb side.
- Each set packed in a PP plastic case.
- Material: CR-V (6150).

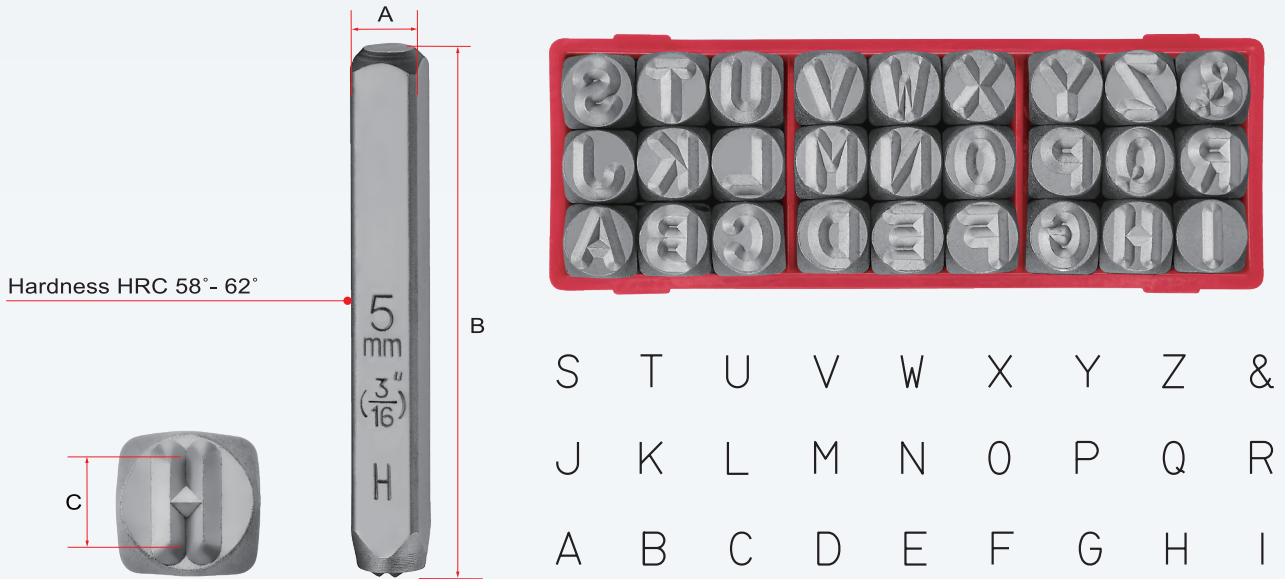


7	8	0
4	5	6
1	2	3

### SPECIFICATION

Item No.	Character Size <b>C</b>	Shank Size Square <b>A</b>	Shank Size Length (±0.4) <b>B</b>	Standard Pack Quantity
<b>GN-2</b>	2.0mm(5/64")	6.35mm	61mm	80 Sets/CTN
<b>GN-3</b>	3.0mm (1/8")	6.35mm	61mm	80 Sets/CTN
<b>GN-4</b>	4.0mm (5/32")	6.35mm	60mm	80 Sets/CTN
<b>GN-5</b>	5.0mm (3/16")	7.93mm	60mm	50 Sets/CTN
<b>GN-6</b>	6.0mm (1/4")	7.93mm	60mm	50 Sets/CTN
<b>GN-7</b>	7.0mm (9/32")	9.52mm	67mm	36 Sets/CTN
<b>GN-8</b>	8.0mm (5/16")	11.11mm	68mm	24 Sets/CTN
<b>GN-10</b>	10.0mm (3/8")	12.70mm	70mm	18 Sets/CTN
<b>GN-12</b>	12.0mm (1/2")	14.28mm	79mm	10 Sets/CTN

- Alphabet steel stamp set, 27 pcs/set include A~Z plus symbol &.
- Surface treatment: Sandblasting.
- Hardness: Front font HRC 58-62 degrees.
- Marked with character and size on the thumb side.
- Each set packed in a PP plastic case.
- Material: CR-V (6150).

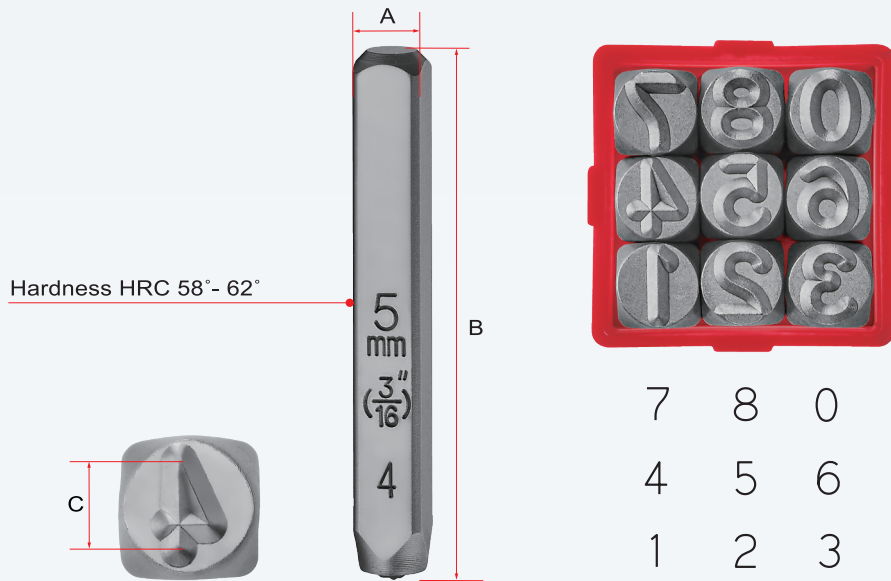


### SPECIFICATION

Item No.	Character Size C	Shank Size Square A	Shank Size Length (±0.4) B	Standard Pack Quantity
EL-2	2.0mm (5/64")	6.35mm	61mm	30 Sets/CTN
EL-3	3.0mm (1/8")	6.35mm	61mm	30 Sets/CTN
EL-4	4.0mm (5/32")	6.35mm	60mm	30 Sets/CTN
EL-5	5.0mm (3/16")	7.93mm	60mm	16 Sets/CTN
EL-6	6.0mm (1/4")	7.93mm	60mm	16 Sets/CTN
EL-7	7.0mm (9/32")	9.52mm	67mm	12 Sets/CTN
EL-8	8.0mm (5/16")	11.11mm	68mm	8 Sets/CTN
EL-10	10.0mm (3/8")	12.70mm	70mm	6 Sets/CTN
EL-12	12.0mm (1/2")	14.28mm	79mm	4 Sets/CTN



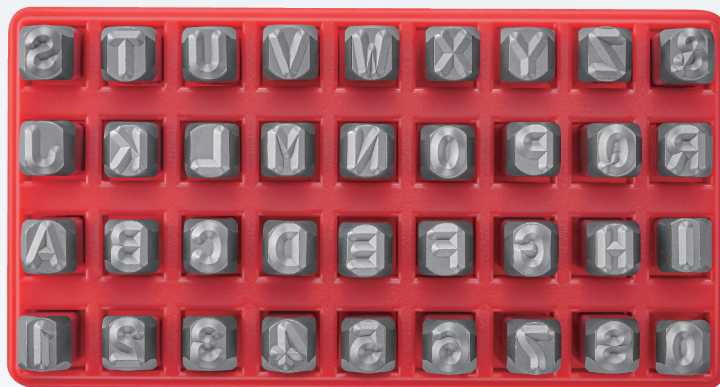
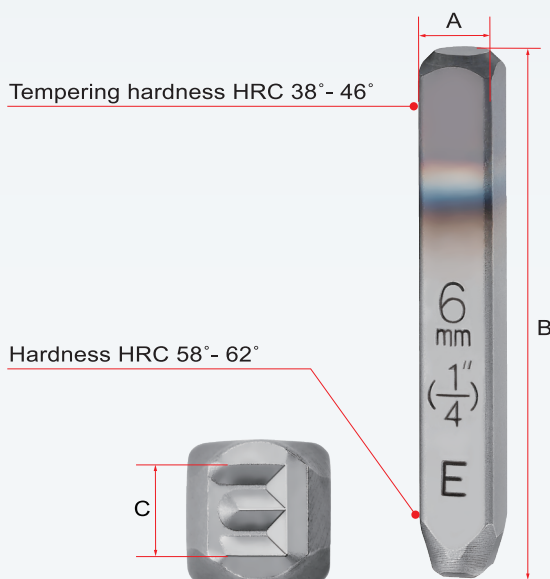
- Number steel stamp set, 9pcs/set include 0-8 (6 is used as 9 when upside-down).
- Surface treatment: Sandblasting.
- Hardness: Front font HRC 58-62 degrees.
- Marked with character and size on the thumb side.
- Each set packed in a PP plastic case.
- Material: CR-V (6150).



### SPECIFICATION

Item No.	Character Size C	Shank Size Square A	Shank Size Length (±0.4) B	Standard Pack Quantity
EN-2	2.0mm (5/64")	6.35mm	61mm	80 Sets/CTN
EN-3	3.0mm (1/8")	6.35mm	61mm	80 Sets/CTN
EN-4	4.0mm (5/32")	6.35mm	60mm	80 Sets/CTN
EN-5	5.0mm (3/16")	7.93mm	60mm	50 Sets/CTN
EN-6	6.0mm (1/4")	7.93mm	60mm	50 Sets/CTN
EN-7	7.0mm (9/32")	9.52mm	67mm	36 Sets/CTN
EN-8	8.0mm (5/16")	11.11mm	68mm	24 Sets/CTN
EN-10	10.0mm (3/8")	12.70mm	70mm	18 Sets/CTN
EN-12	12.0mm (1/2")	14.28mm	79mm	10 Sets/CTN

- Numeral and Alphabet steel stamp 36PCS: including 27PCS of A~Z, symbol & and 9PCS of 0~8.
- Surface treatment: Sandblasting.
- Hardness: Front font HRC 58-62 degrees.  
Tail-end tempering HRC 38-46 degrees.
- Marked with character and size on the thumb side.
- Each stamp is double-beveled face for easy sighting.
- Each set packed in a PP plastic case.
- Material: CR-V (6150).



S	T	U	V	W	X	Y	Z	&
J	K	L	M	N	O	P	Q	R
A	B	C	D	E	F	G	H	I
1	2	3	4	5	6	7	8	0

### SPECIFICATION

Item No.	Character Size C	Shank Size Square A	Shank Size Length (±0.4) B	Standard Pack Quantity
YC607-1	1.0mm(3/64")	6.35mm	62mm	30 Sets/CTN
YC607-1.5	1.5mm(1/16")	6.35mm	62mm	30 Sets/CTN
YC607-2	2.0mm(5/64")	6.35mm	61mm	30 Sets/CTN
YC607-2.5	2.5mm(3/32")	6.35mm	61mm	30 Sets/CTN
YC607-3	3.0mm (1/8")	6.35mm	60mm	30 Sets/CTN
YC607-4	4.0mm (5/32")	6.35mm	60mm	30 Sets/CTN
YC607-5	5.0mm (3/16")	7.93mm	61mm	20 Sets/CTN
YC607S-6	6.0mm (1/4")	7.93mm	60mm	20 Sets/CTN
YC607-6	6.0mm (1/4")	9.52mm	67mm	12 Sets/CTN
YC607-7	7.0mm (9/32")	11.11mm	68mm	6 Sets/CTN
YC607S-8	8.0mm (5/16")	11.11mm	67mm	6 Sets/CTN
YC607-8	8.0mm (5/16")	12.70mm	70mm	6 Sets/CTN
YC607-10	10.0mm (3/8")	12.70mm	71mm	6 Sets/CTN
YC607H-2.5	2.5mm(3/32")	7.93mm	64mm	20 Sets/CTN
YC607L-2.5	2.5mm(3/32")	7.93mm	70mm	20 Sets/CTN
YC607H-3	3.0mm (1/8")	7.93mm	64mm	20 Sets/CTN
YC607L-3	3.0mm (1/8")	9.52mm	70mm	12 Sets/CTN
YC607H-5	5.0mm (3/16")	9.52mm	68mm	12 Sets/CTN
YC607L-5	5.0mm (3/16")	11.11mm	70mm	6 Sets/CTN
YC607H-6	6.0mm (1/4")	11.11mm	76mm	6 Sets/CTN
YC607L-6	6.0mm (1/4")	12.70mm	76mm	6 Sets/CTN

Most of our numeral and alphabet steel stamp series can be combined into sets.  
You are welcome to inquire.

# YC-616

## Lowercase Letter Steel Stamps

- Lowercase alphabet steel stamp Set, 27 PCS/SET include a~z plus symbol &.
- Surface treatment: Sandblasting.
- Hardness: Front font HRC 58-62 degrees.  
Tail-end tempering HRC 38-46 degrees.
- Marked with character and size on the thumb side.
- Each set packed in a PP plastic case.
- Material: CR-V (6150).

YC616a



c | s t u v w x y z &  
j k l m n o p q r  
a b c d e f g h i

YC616b



c | s t u v w x y z &  
j k l m n o p q r  
a b c d e f g h i

### YC616a SPECIFICATION

Item No.	Character Size <b>C</b>	Shank Size Square <b>A</b>	Shank Size Length (±0.4) <b>B</b>	Standard Pack Quantity
YC616a-2	2.0mm (5/64")	6.35mm	61mm	30 Sets/CTN
YC616a-3	3.0mm (1/8")	6.35mm	60mm	30 Sets/CTN
YC616a-4	4.0mm (5/32")	6.35mm	60mm	30 Sets/CTN

YC616a Each alphabet has the same height.

### YC616b SPECIFICATION

Item No.	Character Size <b>C</b>	Shank Size Square <b>A</b>	Shank Size Length (±0.4) <b>B</b>	Standard Pack Quantity
YC616b-2	2.0mm (5/64")	6.35mm	61mm	30 Sets/CTN
YC616b-3	3.0mm (1/8")	6.35mm	60mm	30 Sets/CTN
YC616b-4	4.0mm (5/32")	6.35mm	60mm	30 Sets/CTN

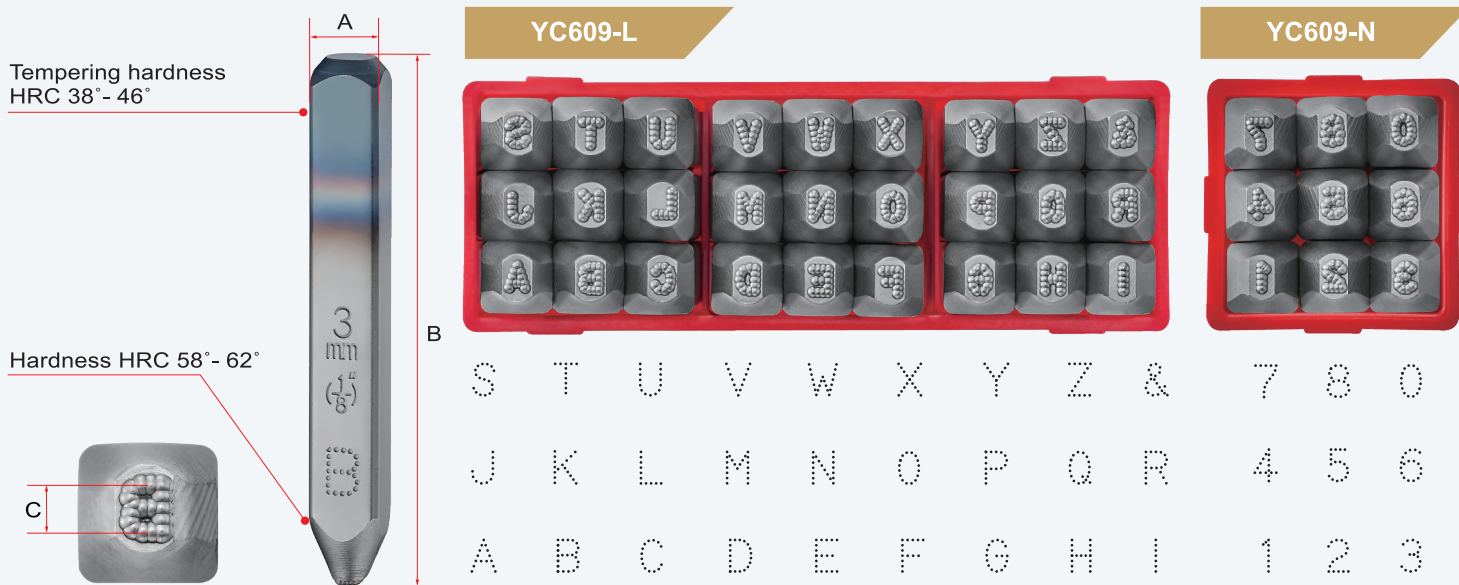
YC616b The height of each alphabet is scaled proportionally.



# YC-609

## Round-Dotted Steel Stamps (LOW-STRESS DOT STYLE)

- Low stress dot style steel stamps (round dot effect).
- Surface treatment: Sandblasting.
- Hardness: Front font HRC 58-62 degrees.  
Tail-end tempering HRC 38-46 degrees.
- Marked with character and size on the thumb side.
- Each stamp is double-beveled face for easy sighting.
- Each set packed in a PP plastic case.
- Material: CR-V (6150).



### YC609-L Alphabet steel stamp set, 27 pcs/set include A~Z plus symbol &

Item No.	Character Size C	Shank Size Square A	Shank Size Length (±0.4) B	Standard Pack Quantity
YC609-3L	3.0mm (1/8")	9.52mm	69mm	12 Sets/CTN
YC609-4L	4.0mm (5/32")	9.52mm	69mm	12 Sets/CTN
YC609-5L	5.0mm (3/16")	11.11mm	70mm	8 Sets/CTN
YC609-6L	6.0mm (1/4")	12.70mm	76mm	6 Sets/CTN
YC609-8L	8.0mm (5/16")	12.70mm	74mm	6 Sets/CTN
YC609-10L	10.0mm (3/8")	15.85mm	85mm	4 Sets/CTN
YC609-12L	12.0mm (1/2")	15.85mm	101mm	4 Sets/CTN

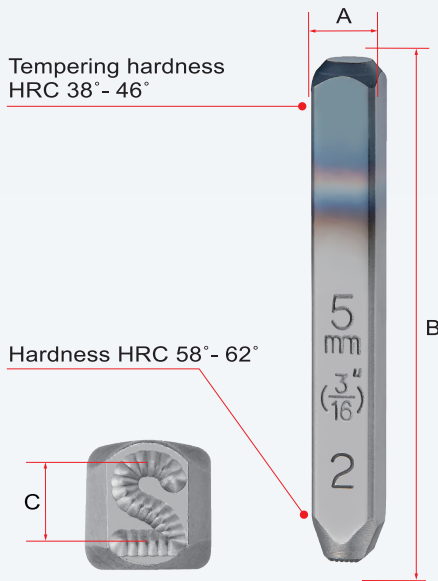
### YC609-N Number steel stamp set, 9pcs/set include 0-8

Item No.	Character Size C	Shank Size Square A	Shank Size Length (±0.4) B	Standard Pack Quantity
YC609-3N	3.0mm (1/8")	9.52mm	69mm	36 Sets/CTN
YC609-4N	4.0mm (5/32")	9.52mm	69mm	36 Sets/CTN
YC609-5N	5.0mm (3/16")	11.11mm	70mm	24 Sets/CTN
YC609-6N	6.0mm (1/4")	12.70mm	76mm	18 Sets/CTN
YC609-8N	8.0mm (5/16")	12.70mm	74mm	18 Sets/CTN
YC609-10N	10.0mm (3/8")	15.85mm	85mm	10 Sets/CTN
YC609-12N	12.0mm (1/2")	15.85mm	101mm	10 Sets/CTN

# YC-609B

## Sharp-Dotted Steel Stamps (LOW-STRESS DOT STYLE)

- Low stress dot style steel stamps (sharp dot effect).
- Surface treatment: Sandblasting.
- Hardness: Front font HRC 58-62 degrees.  
Tail-end tempering HRC 38-46 degrees.
- Marked with character and size on the thumb side.
- Each stamp is double-beveled face for easy sighting.
- Each set packed in a PP plastic case.
- Material: CR-V (6150).



### YC609B-L



S T U V W X Y Z & 7 8 0  
J K L M N O P Q R 4 5 6  
A B C D E F G H I 1 2 3

### YC609B-N



### YC609B-L Alphabet steel stamp set, 27 pcs/set include A~Z plus symbol &

Item No.	Character Size <b>C</b>	Shank Size Square <b>A</b>	Shank Size Length (±0.4) <b>B</b>	Standard Pack Quantity
YC609B-3L	3.0mm (1/8")	6.35mm	60mm	30 Sets/CTN
YC609B-4L	4.0mm (5/32")	6.35mm	59mm	30 Sets/CTN
YC609B-5L	5.0mm (3/16")	7.93mm	61mm	16 Sets/CTN
YC609B-6L	6.0mm (1/4")	7.93mm	60mm	16 Sets/CTN
YC609B-8L	8.0mm (5/16")	11.11mm	60mm	8 Sets/CTN
YC609B-10L	10.0mm (3/8")	12.70mm	71mm	6 Sets/CTN

### YC609B-N Number steel stamp set, 9pcs/set include 0-8

Item No.	Character Size <b>C</b>	Shank Size Square <b>A</b>	Shank Size Length (±0.4) <b>B</b>	Standard Pack Quantity
YC609B-3N	3.0mm (1/8")	6.35mm	60mm	80 Sets/CTN
YC609B-4N	4.0mm (5/32")	6.35mm	59mm	80 Sets/CTN
YC609B-5N	5.0mm (3/16")	7.93mm	61mm	50 Sets/CTN
YC609B-6N	6.0mm (1/4")	7.93mm	60mm	50 Sets/CTN
YC609B-8N	8.0mm (5/16")	11.11mm	60mm	24 Sets/CTN
YC609B-10N	10.0mm (3/8")	12.70mm	71mm	18 Sets/CTN

- Bold font steel stamp set.
- Surface treatment: Sandblasting.
- Hardness: Front font HRC 58-62 degrees.  
Tail-end tempering HRC 38-46 degrees.
- Marked with character and size on the thumb side.
- Each stamp is double-beveled face for easy sighting.
- Each set packed in a PP plastic case.
- Material: CR-V (6150).



### YC613-L Alphabet steel stamp set, 27 pcs/set include A~Z plus symbol &

Item No.	Character Size <b>C</b>	Shank Size Square <b>A</b>	Shank Size Length (±0.4) <b>B</b>	Standard Pack Quantity
YC613-3L	3.0mm (1/8")	9.52mm	70mm	12 Sets/CTN
YC613-6L	6.0mm (1/4")	12.70mm	76mm	6 Sets/CTN
YC613-10L	10.0mm (3/8")	15.85mm	86mm	4 Sets/CTN
YC613-12L	12.0mm (1/2")	15.85mm	101mm	4 Sets/CTN

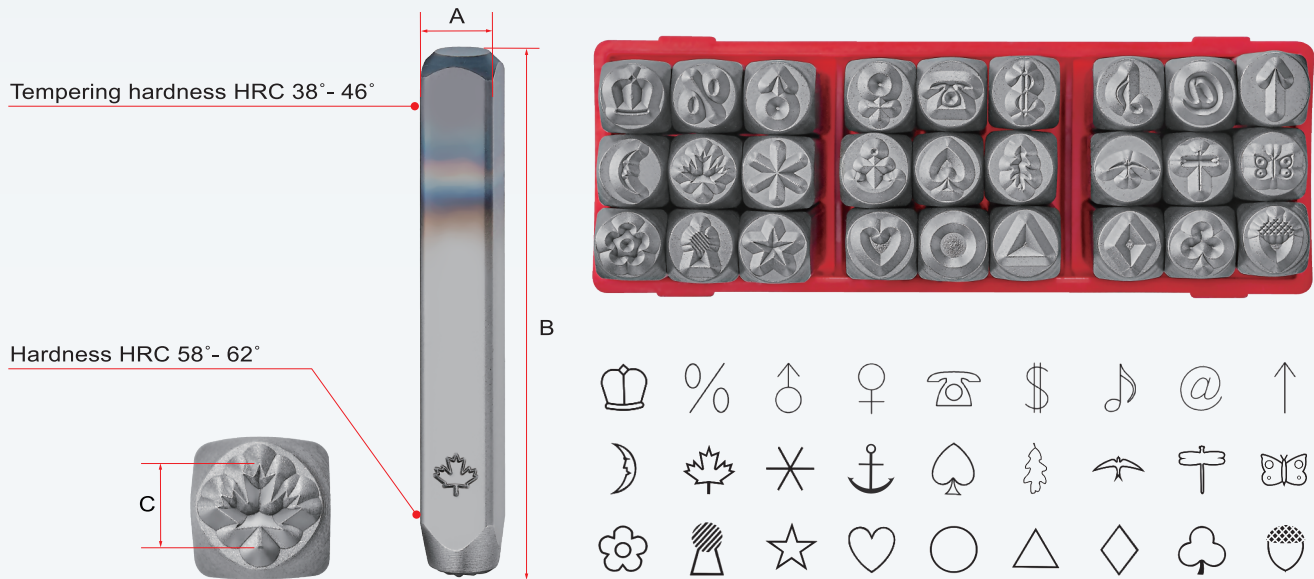
### YC613-N Number steel stamp set, 9pcs/set include 0-8

Item No.	Character Size <b>C</b>	Shank Size Square <b>A</b>	Shank Size Length (±0.4) <b>B</b>	Standard Pack Quantity
YC613-3N	3.0mm (1/8")	9.52mm	70mm	36Sets/CTN
YC613-6N	6.0mm (1/4")	12.70mm	76mm	18Sets/CTN
YC613-10N	10.0mm (3/8")	15.85mm	86mm	10Sets/CTN
YC613-12N	12.0mm (1/2")	15.85mm	101mm	10Sets/CTN



## Pattern Steel Stamps

- Clean and beautiful graphic metal stamps, perfect for jewelry designers and makers.
- Surface treatment: Sandblasting.
- Hardness: Front font HRC 58-62 degrees.  
Tail-end tempering HRC 38-46 degrees.
- Marked with character and size on the thumb side.
- Each stamp is double-beveled face for easy sighting.
- Each set packed in a PP plastic case.
- Material: CR-V (6150).



## SPECIFICATION

Item No.	Character Size <span>C</span>	Shank Size Square <span>A</span>	Shank Size Length (±0.4) <span>B</span>	Standard Pack Quantity
YC612-2	2.0mm (5/64")	6.35mm	61mm	30 SETS/CTN
YC612-4	4.0mm (5/32")	7.93mm	63mm	16 SETS/CTN
YC612-6	6.0mm (1/4")	9.52mm	67mm	12 SETS/CTN

- Reversed alphabet steel stamp set: 27 pieces includes A-Z, symbol &.
- Surface treatment: Sandblasting.
- Hardness: Front font HRC 58-62 degrees.  
Tail-end tempering HRC 38-46 degrees.
- Marked with character and size on the thumb side.
- Each stamp is double-beveled face for easy sighting.
- Each set packed in a PP plastic case.
- Material: CR-V (6150).



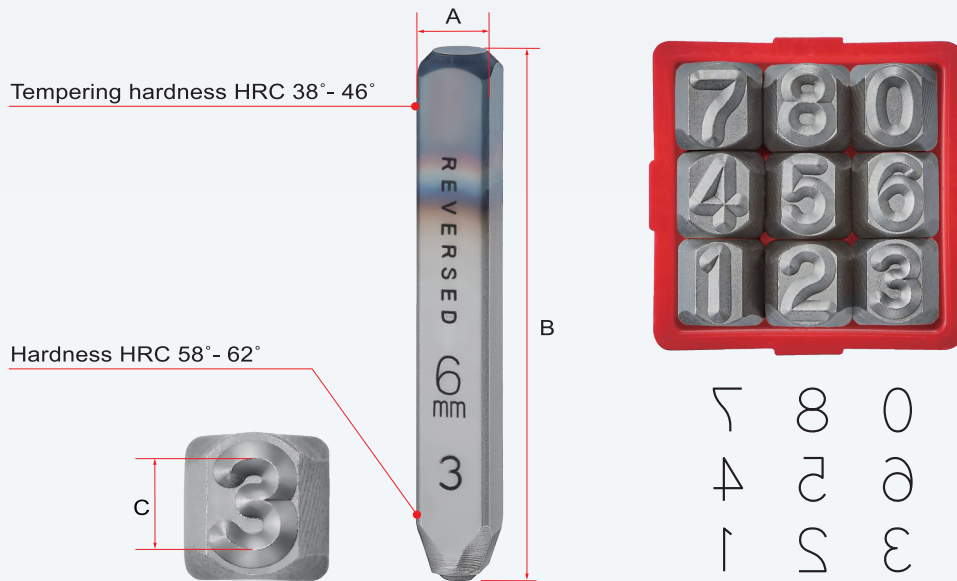
### SPECIFICATION

Item No.	Character Size <b>C</b>	Shank Size Square <b>A</b>	Shank Size Length (±0.4) <b>B</b>	Standard Pack Quantity
YC605-1	1.0mm (3/64")	6.35mm	62mm	30 Sets/CTN
YC605-1.5	1.5mm (1/16")	6.35mm	62mm	30 Sets/CTN
YC605-2	2.0mm (5/64")	6.35mm	61mm	30 Sets/CTN
YC605-2.5	2.5mm (3/32")	6.35mm	61mm	30 Sets/CTN
YC605-3	3.0mm (1/8")	6.35mm	60mm	30 Sets/CTN
YC605-4	4.0mm (5/32")	7.93mm	62mm	16 Sets/CTN
YC605-5	5.0mm (3/16")	7.93mm	61mm	16 Sets/CTN
YC605-6	6.0mm (1/4")	9.52mm	67mm	12 Sets/CTN
YC605-8	8.0mm (5/16")	12.70mm	70mm	6 Sets/CTN
YC605-10	10.0mm (3/8")	12.70mm	71mm	6 Sets/CTN
YC605-12	12.0mm (1/2")	15.85mm	83mm	4 Sets/CTN

# YC-606

## Reversed Number Steel Stamps

- Reversed number steel stamp set: 9 pieces includes 0-8 (6 is used as 9 when upside-down).
- Surface treatment: Sandblasting.
- Hardness: Front font HRC 58-62 degrees.  
Tail-end tempering HRC 38-46 degrees.
- Marked with character and size on the thumb side.
- Each stamp is double-beveled face for easy sighting.
- Each set packed in a PP plastic case.
- Material: CR-V (6150).



### SPECIFICATION

Item No.	Character Size C	Shank Size Square A	Shank Size Length (±0.4) B	Standard Pack Quantity
YC606-1	1.0mm (3/64")	6.35mm	62mm	80 Sets/CTN
YC606-1.5	1.5mm (1/16")	6.35mm	62mm	80 Sets/CTN
YC606-2	2.0mm (5/64")	6.35mm	61mm	80 Sets/CTN
YC606-2.5	2.5mm (3/32")	6.35mm	61mm	80 Sets/CTN
YC606-3	3.0mm (1/8")	6.35mm	60mm	80 Sets/CTN
YC606-4	4.0mm (5/32")	7.93mm	62mm	50 Sets/CTN
YC606-5	5.0mm (3/16")	7.93mm	61mm	50 Sets/CTN
YC606-6	6.0mm (1/4")	9.52mm	67mm	36 Sets/CTN
YC606-8	8.0mm (5/16")	12.70mm	70mm	18 Sets/CTN
YC606-10	10.0mm (3/8")	12.70mm	71mm	18 Sets/CTN
YC606-12	12.0mm (1/2")	15.85mm	83mm	10 Sets/CTN



- Reversed alphabet steel stamp 27pcs: A~Z including symbol &.
- Surface treatment: Sandblasting.
- Hardness: Front font HRC 58-62 degrees.  
Tail-end tempering HRC 38-46 degrees.
- Marked with character and size on the thumb side.
- Each stamp is double-beveled face for easy sighting.
- Each set packed in a PP plastic case.
- Typeface according to DIN 1451.
- Material: CR-V (6150).



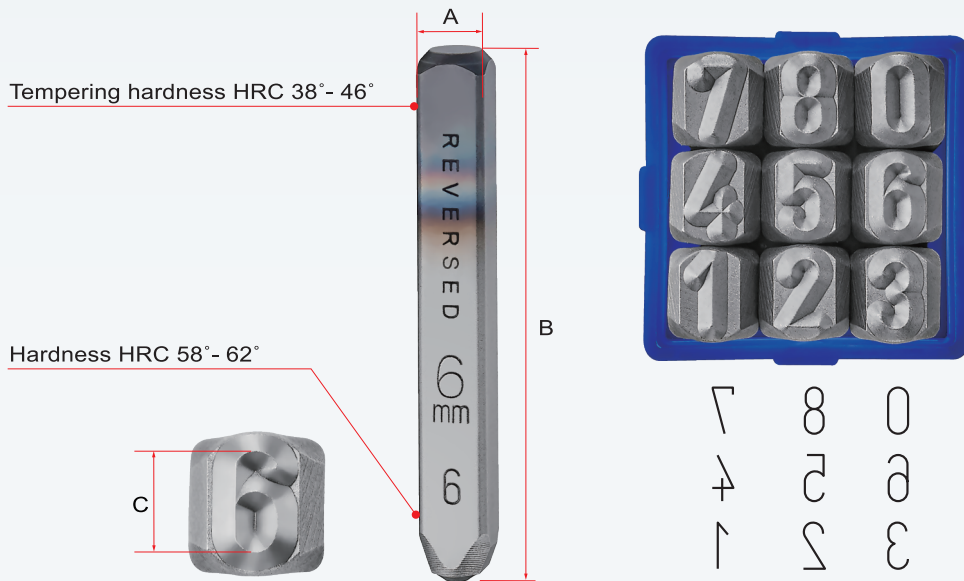
### SPECIFICATION

Item No.	Character Size <b>C</b>	Shank Size Square <b>A</b>	Shank Size Length (±0.4) <b>B</b>	Standard Pack Quantity
YC617-1.5	1.5mm(1/16")	6.35mm	62mm	30 Sets/CTN
YC617-2	2.0mm(5/64")	6.35mm	61mm	30 Sets/CTN
YC617-2.5	2.5mm (3/32")	6.35mm	61mm	30 Sets/CTN
YC617-3	3.0mm (1/8")	6.35mm	60mm	30 Sets/CTN
YC617-4	4.0mm (5/32")	6.35mm	60mm	30 Sets/CTN
YC617-5	5.0mm (3/16")	7.93mm	61mm	16 Sets/CTN
YC617-6	6.0mm (1/4")	7.93mm	60mm	16 Sets/CTN
YC617-8	8.0mm (5/16")	11.11mm	68mm	8 Sets/CTN
YC617-10	10.0mm (3/8")	12.70mm	74mm	6 Sets/CTN
YC617-12	12.0mm (1/2")	15.85mm	84mm	4 Sets/CTN

# YC-618

## Reversed German Number Steel Stamps

- Reversed number steel stamp set: 9 pieces includes 0-8 (6 is used as 9 when upside-down).
- Surface treatment: Sandblasting.
- Hardness: Front font HRC 58-62 degrees.  
Tail-end tempering HRC 38-46 degrees.
- Marked with character and size on the thumb side.
- Each stamp is double-beveled face for easy sighting.
- Each set packed in a PP plastic case.
- Typeface according to DIN 1451.
- Material: CR-V (6150).



### SPECIFICATION

Item No.	Character Size <b>C</b>	Shank Size Square <b>A</b>	Shank Size Length (±0.4) <b>B</b>	Standard Pack Quantity
YC618-1.5	1.5mm(1/16")	6.35mm	62mm	80 Sets/CTN
YC618-2	2.0mm(5/64")	6.35mm	61mm	80 Sets/CTN
YC618-2.5	2.5mm (3/32")	6.35mm	61mm	80 Sets/CTN
YC618-3	3.0mm (1/8")	6.35mm	60mm	80 Sets/CTN
YC618-4	4.0mm (5/32")	6.35mm	60mm	80 Sets/CTN
YC618-5	5.0mm (3/16")	7.93mm	61mm	50 Sets/CTN
YC618-6	6.0mm (1/4")	7.93mm	60mm	50 Sets/CTN
YC618-8	8.0mm (5/16")	11.11mm	68mm	24 Sets/CTN
YC618-10	10.0mm (3/8")	12.70mm	74mm	18 Sets/CTN
YC618-12	12.0mm (1/2")	15.85mm	84mm	10 Sets/CTN

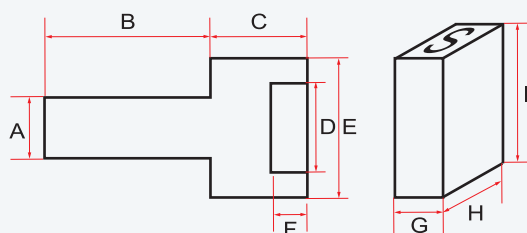
- Interchangeable Steel Type Metal Stamp Kit.
- Type Holder Material: SCM440(YC-610A) ; S45C(YC-610B)  
Steel Type Material: CRV (6150).
- Each set packed in a red plastic case.

### Kit includes:

- Holder × 1pc
- Hexagon wrench × 1pc
- Steel types × 100pieces :
  - ▶ Type letter A -Z × 2pc for each
  - ▶ Type number 0 -8 × 4pc for each
  - ▶ Type number 6 × 5pc (6 is used as 9)
  - ▶ Slashed “/” × 2pc
  - ▶ Dashed “-” × 2pc
  - ▶ “&” × 1pc
  - ▶ Blank space × 6pc



- ※ YC-610A: Type holder can accommodate 9 pieces of our steel types.
- ※ YC-610B: Type holder can accommodate 10 pieces of our steel types.
- ※ Steel types can be changed according to customer requirements.



### Type holder is used by machine or hand.

Tolerance of "I" ±0.01 Unit:mm

Item No.	Character Size	A	B	C	D	E	F	G	H	I	Standard Pack Quantity
YC610A-3	3.0mm (1/8")	19	80	30	32.5	46	14	3.5	6.35	19	12Sets/CTN
YC610A-5	5.0mm (3/16")	25.4	90	32	52	67	15	5.5	7.93	22	12Sets/CTN
YC610A-6	6.0mm (1/4")	25.4	90	32	52	67	15	5.5	7.93	22	12Sets/CTN

### Type holder is used by hand.

Tolerance of "I" ±0.01 Unit:mm

Item No.	Character Size	A	B	C	D	E	F	G	H	I	Standard Pack Quantity
YC610B-3	3.0mm (1/8")	18.4	80	30	36	56	13	3.5	6.35	19	12Sets/CTN
YC610B-5	5.0mm (3/16")	20.5	90	32	57.5	74	15	5.5	7.93	22	12Sets/CTN
YC610B-6	6.0mm (1/4")	20.5	90	32	57.5	74	15	5.5	7.93	22	12Sets/CTN



# YC-701

## Screw Extractor Set

- For removing broken bolts, screws and threaded parks.
- Plastic case and blister card packing.
- Material: SCM435

### SPECIFICATION

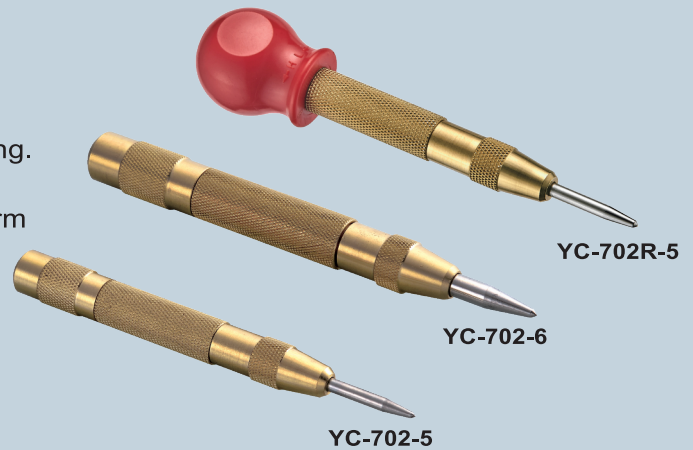
Item No.	Drill Size		Standard Pack Quantity
YC701-5	5PCS/SET	Include : 1/8"-1/4" 5/16"-7-16" 9/16"-3/4" 1/4"-5/16" 7/16"-9/16"	120Sets/CTN
YC701-6	6PCS/SET	Include: 1/8"-1/4" 5/16"-7-16" 9/16"-3/4" 1/4"-5/16" 7/16"-9/16" 3/4"-1"	80Sets/CTN



# YC-702

## Automatic Center Punch

- Easily hold and non-slippery handle.
- Body material: Brass
- Tip material: S2 alloy steel.
- Elastic spring is inside handle and labor-saving.
- Convenient way to start holds. Just a simple push of hand to activate the strike for a uniform punch again and again.



### SPECIFICATION

Item No.	Size	Length	Standard Pack Quantity
YC702-5	5 inch	130mm	120 Pieces/CTN
YC702-6	6 inch	151mm	120 Pieces/CTN
YC702R-5	5 inch	134mm	80 Pieces/CTN



**YOUNG CYCLE**

**Young Cycle Industrial Co., Ltd.**

No. 25, Ln. 307, Sec. 3, Zhongqing Rd., Xitun District,  
Taichung City 407, Taiwan

TEL:+886-4-24250033 FAX+886-4-24256968

E-mail:yc2@youngcycle.com.tw

<https://www.youngcycle.com.tw>

