



กระบอกอัดฉีดจารบีแบบมือบีบขนาด 3 ออนซ์ รุ่นประหยัด

ECONOMY MINI GREASE GUN

Small, versatile grease gun allows for front or top pipe placement. Barrel takes 3 oz. grease cartridge or can be suction loaded. Includes 5-1/2" straight pipe and standard duty coupler.



Order No.	Descriptions
30-100	Individual clamshell. 5 per case cut carton.

กระบอกอัดฉีดจารบีแบบมือบีบ HEAVY DUTY MINI GREASE GUN KITS

Small, versatile gun allows for front or top pipe placement. Barrel takes 3 oz. grease cartridge or can be suction loaded. Includes push lock plunger, die-cast T-handle that locks in place for loading, 5-1/2" straight grease pipe, standard duty coupler and 3 oz. cartridge of grease*. Develops up to 4,500 PSI.



30-001

30-190

30-192

Order No.	Descriptions
30-001	With UltraLube® Multi-Purpose Lithium Grease. 10 per master. (แถมจารบี)
30-190	With LubriMatic Marine Corrosion Control and Trailer Wheel Bearing Grease. 10 per master. (แถมจารบี)
30-192	With LubriMatic Multi-Purpose Lithium Grease. 10 per master. (แถมจารบี)
30-193	(not shown) Gun only. Bulk packaged. 25 per master. (เฉพาะกระบอกอัดฉีดจารบี)

กระบอกอัดฉีดจารบีแบบมือบีบทั่วไปขนาด 3 ออนซ์ GENERAL PURPOSE MINI GREASE GUN KITS

A compact, "tool box" size grease gun perfect for hard-to-reach jobs. Ideal for do-it-yourself automotive, industrial, farm, RV and marine applications. Includes zinc die-cast head cap and pistol grip for easy one-hand operation and 3 oz. cartridge of LubriMatic® grease. Develops up to 3,600 PSI.



Order No.	Descriptions
30-132	With 3-1/2" pipe and coupler and LubriMatic® Multi-Purpose Grease*. 10 per master.
30-132-07	(not shown) Gun only. Bulk packaged. 20 per master. (เฉพาะกระบอกอัดฉีดจารบี)

กระบอกอัดฉีดจารบีแบบใช้แบตเตอรี่ BATTERY OPERATED GREASE GUNS

Pro-Tuff 18v Battery Operated Grease Gun Kit
A first-in-class, powerful, cordless grease gun. 18 volt battery and heavy duty motor deliver over 7,500 PSI. 3-way loading and balanced to minimize operator strain.



Order No.	Descriptions
30-600	Grease gun in plastic molded carrying case. Includes 1 each of all replacement parts listed below. 2 per master.

Replacement Parts (not shown):

Order No.	Descriptions
30-610	18v Battery. Individual clamshell. 2 per master.
30-611	18v Battery Charger. Individual clamshell. 2 per master.
30-612	42" Flex Hose. Individual clamshell. 5 per master.
30-613	Barrel & Plunger Assembly. Individually boxed. 5 per master.
30-614	Trigger Switch. Individually boxed. 5 per master.
30-615	Motor Assembly. Individually boxed. 5 per master.
30-616	Plastic Housing. Individually boxed. 5 per master.

Hammer
ต้อน

Pipe & Plumbing
Tools
เครื่องมือสำหรับงานท่อ

Cutting
เครื่องมือตัด

Construction
Tools
เครื่องมือสำหรับงานก่อสร้าง

1000 V
1000 โวลท์

1000 V NON SPARKING
1000 โวลท์ /
กันประกายไฟ

ANTI-DROP TOOLS
เครื่องมือช่างพร้อม
อุปกรณ์กันตก

Non-Sparking
เครื่องมือช่าง ป้องกันประกายไฟ

Non-Magnetic Titanium
เครื่องมือช่างไทเทเนียม

Grease Gun
กระบอกอัดฉีดจารบี

Roller & Jacks
ล้อเลื่อนไฮดรอลิก

GREASE GUN

กระบอกฉีดจารบี



กระบอกฉีดจารบีแบบมือโยกขนาด 14 ออนซ์ STANDARD DUTY GREASE GUN

Ideal for household and do-it-yourself automotive use. Uses standard 14 oz. of grease/40 strokes.



Order No.	Descriptions
30-200	Individually boxed. 5 per master.
30-449	Polybagged. 10 per master.

กระบอกฉีดจารบีใช้งานหนัก แบบมือโยกขนาด 14 ออนซ์ PROFESSIONAL GREASE GUN

Our heavy duty grease gun for automotive professionals. Variable/short stroke for easy use in confined areas. Air bleeder and bulk loader fitting for 3-way loading: 14 oz. cartridge, bulk or suction. 5-3/8" pipe and coupler. Plated lever with comfortable oversized grip. Develops up to 10,000 PSI and delivers 1.8 oz./40 strokes.



Order No.	Descriptions
30-475	Individually boxed. 5 per master.

กระบอกฉีดจารบีแบบมือปั๊มขนาด 14 ออนซ์ STANDARD DUTY PISTOL GREASE GUN

Easy one-hand operation. 2-way loading : 14oz. cartridge or bulk load. Head cap port for adding air bleeder or bulk loader fitting. Develops up to 5,000 PSI. Equipped with 3-1/2" grease pipe and coupler.



30-300

30-310

Order No.	Descriptions
30-300	Individually boxed. 5 per carton
30-310	Includes 12" Flex Hose. Individually boxed. 5 per carton.

กระบอกฉีดจารบีใช้งานหนัก แบบมือโยกขนาด 14 ออนซ์ INDUSTRIAL GREASE GUN

Made for the punishing day-in and day-out service required by industrial customers. Variable/short stroke for easy use in confined areas. Rugged fully zinc-plated finish. Dual port head cap with bulk loader fitting for 3-way loading: 14oz. cartridge, bulk or suction. 5-3/8" pipe and coupler. Plated lever with comfortable oversized grip. Develops up to 10,000 PSI. Delivers 1.8 oz./40 strokes.



Order No.	Descriptions
30-465	Individually boxed. 5 per master.

กระบอกฉีดจารบีใช้งานหนัก แบบมือโยกขนาด 14 ออนซ์ THE ULTIMATE® GREASE GUN

Equipped with 10" grease pipe, HD coupler, longer lever, barrel and lever comfort grips, air bleeder valve, bulk loader fitting, variable stroke and 3-way loading: 14 oz. cartridge, bulk or suction. Develops up to 10,000 PSI, delivers 3.33 oz./40 strokes. Built to take extreme punishment.



Order No.	Descriptions
30-480	Individually boxed. 5 per master.

ชุดกระบอกฉีดจารบีแบบใช้ลมขนาด 14 ออนซ์ AIR OPERATED GREASE GUN COMBO KIT

Everything you need in one kit! Features continuous flow, air operated grease gun with special "butterfly lock" screw that enables grip handle to rotate 360° for working in confined areas. 3-way loading: 14oz. cartridge, bulk or suction. Delivers up to 6,000 PSI. Also includes lever gun head cap for converting to manual operation. Kit includes 28 items in all - pliers, screw drivers, wrenches and more. Ideal for the shop, farm and work site.



Order No.	Descriptions
30-500	Complete with carrying case. 1 per master.



กระบอกลัดจารบีแบบมือปั๊ม

PROFESSIONAL PISTOL GREASE GUNS

Features variable stroke for use in tight places. 3-way loading: 14 oz. cartridge, bulk or suction. Includes air bleeder valve and bulk loader fitting. Develops up to 7,000 PSI. Delivers 1 oz./40 strokes.



Order No.	Descriptions
30-416	Includes 18" Flex Hose and vinyl handle grip. 5 per master.

กระบอกลูบ-ฉีดน้ำมัน

SUCTION GREASE GUN

Designed for draining and filling non-corrosive liquids. Barrel holds approximately one pint with 9" stroke. Features 12" plastic hose and durable corrosion-resistant finish. Hose OD 9/16", Hose ID 5/16"



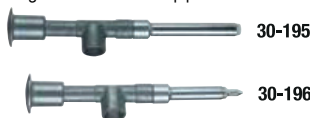
Order No.	Descriptions
30-118	10 per master.

กระบอกลัดจารบี

MISCELLANEOUS GREASE GUNS

Jiffy Luber® Handi Gun

Designed for quick grease jobs. Squeeze tubes (not included) fit into zinc die-cast body for easy dispensing. Includes 2-11/16" pipe.



Order No.	Descriptions
30-195	With plastic push-type adapter. Bulk packaged. 10 per master.
30-196	With needle tip. Bulk packaged. 10 per master.

Handi-Grip Pistol Luber®

All-purpose gun attaches to handy squeeze tubes of grease (not included). Includes spring-returned plated steel lever, zinc die-cast body, riveted plated steel link and standard duty coupler.

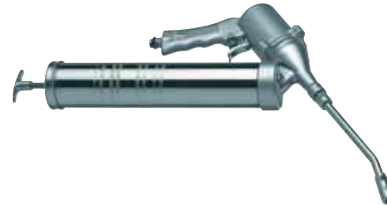


Order No.	Descriptions
30-197	With 5-1/2" Flex Hose. 10 per master.

กระบอกลัดจารบีแบบใช้ลมขนาด 14 ออนซ์

CONTINUOUS FLOW AIR OPERATED GREASE GUN

Continuously pumps grease while trigger is depressed. Delivers up to 6,000 PSI. Head cap port for adding air bleeder valve or bulk loader fitting. Capable of 3-way loading: 14oz. cartridge, bulk or suction. Recommended inlet pressure - 90 PSI. Dispenses 5 oz. per minute



Order No.	Descriptions
30-114	10 per master.

สายอ่อนอัดจารบี

FLEXIBLE GREASE HOSES

Economy Flexible Grease Hoses

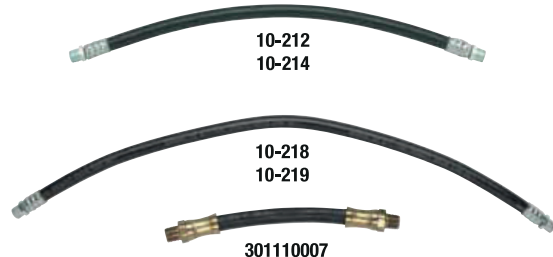
For use on hand operated grease guns only. 1/8" NPT male fittings on each end. Recommended working pressure is 3,000 PSI.



Order No.	Descriptions
10-200	12" length. Carded. 10 per master.
10-201	18" length. Carded. 10 per master.

Standard Duty Flexible Grease Hoses

For use on hand operated grease guns only. Steel 1/8" NPT male fittings on each end. Recommended working pressure is 5,000 PSI.



Order No.	Descriptions
10-212	12" length. Carded. 10 per master.
10-214	12" length. Bulk packaged. 10 per master.
10-218	18" length. Bulk packaged. 10 per master.
10-219	18" length. Carded. 5 per master.
301110007	6" length with heavy duty brass end fittings. Bulk packaged. 200 per master.

Flexible Grease Hoses for Air Operated Equipment

Heavy duty, double steel braided, high quality rubber grease hose with bend restrictor for air operated systems. 1/8" NPT male fittings on each end. Recommended working pressure is 8,000 PSI.



Order No.	Descriptions
10-514	18" length. Carded. 10 per master.
10-536	(not shown) 36" length. Bulk packaged. 12 per master.

Hammer
ด้าม

Pipe & Plumbing Tools
เครื่องมือสำหรับงานท่อ

Cutting
เครื่องมือตัด

Construction
เครื่องมือสำหรับงานก่อสร้าง

1000 V
1000 โวลต์

1000 V NON SPARKING
1000 โวลต์ /
กันประกายไฟ

ANTI-DROP TOOLS
เครื่องมือทางพร้อม
อุปกรณ์กันตก

Non-Sparking
ป้องกันประกายไฟ
Non-Magnetic Titanium
เครื่องมือต่างไม่เหนียว
กันแม่เหล็กไทเทเนียม

Grease Gun
กระบอกลัดจารบี

Roller & Jock
ล้อเลื่อนล้อแขนง

GREASE GUN

กระบอกอัดจารบี



หัวอัดจารบี

COUPLERS

for air operated equipment

Heavy Duty Coupler (หัวอัดจารบีแบบใช้งานหนัก)

Designed for use with air powered equipment as well as hand guns. Heavy duty construction withstands higher pressures. 3 hardened jaws reverse for longer coupler life. 2" long coupler with 11/16" diameter is tapped for 1/8" pipe threads. Recommended working pressure is 8,000 PSI.



Order No.	Descriptions
05-036	Carded. 10 per master.
05-038	Bulk packaged. 25 per master.

360° Heavy Duty Swivel Coupler (หัวอัดจารบีใช้งานหนักแบบหมุนรอบตัว)

Swivels in full 360° circle and lock in place. 45° angle gives easy access to most grease fittings. 1/8" NPT female inlet. For use with air operated equipment. Recommended working pressure is 6,000 PSI..



Order No.	Descriptions
05-052	Carded. 5 per master.

ท่อแบ่งอัดจารบี

GREASE PIPES

5-3/8" Curved Grease Pipe

Standard length pipe with 1/8" pipe thread on each end. 30° angle



Order No.	Descriptions
05-061	Carded. 10 per master.

หัวอัดจารบี

COUPLERS

for hand operated grease guns only

180° Swivel Coupler (หัวอัดจารบีแบบหมุน 180°)

Designed to lock at any angle up to 180°. Spring-loaded sleeve locks coupler in place for straight applications or slides back for angular application. Has 8" overall length and corrosion-resistant finish. For hand operated grease guns only. Recommended working pressure is 3,000 PSI.



Order No.	Descriptions
05-050	Carded. 10 per master.

360° Swivel Fitting (หัวอัดจารบีแบบหมุนรอบตัว)

Swivels in a full 360° circle and locks in place. 45° angle gives easy access to most grease fittings. comes with 05-028 standard grease coupler and 1/8" female inlet for extension pipe. For hand operated grease guns only. Recommended working pressure is 4,500 PSI..



Order No.	Descriptions
05-057	Carded. 5 per master.

หัวอัดจารบีแบบเม็ดกระดุม

COUPLERS

for air operated equipment

Button Head Fitting Coupler

Specially designed for button head grease fittings. 1/8" NPT female inlet. Zinc-plated steel.



05-048



05-049

Order No.	Descriptions
05-048	For 5/8" button head fittings. Carded. 5 per master.
05-049	For 7/8" button head fittings. Carded. 5 per master.



หัวอัดจารบี

ADAPTERS, NEEDLES & DISPENSERS

GREASE INJECTOR NEEDLE (หัวอัดจารบีแบบเข็มฉีดยา)

Lubricates in very tight places such as universal joints and sealed bearings. Stainless steel 18 gauge x 1-1/2" long needle. Equipped with standard grease fitting and protective plastic holder. For hand operated grease guns only.



Order No.	Descriptions
05-037	Carded. 10 per master.

SEAL-OFF DISPENSER (หัวอัดจารบี)

Use for lubricating cars with grease plugs. Oil and grease resistant rubber tip. 1/8" female NPT. Use with grease gun extension or hose. For hand operated grease guns only.



Order No.	Descriptions
05-041	Carded. 10 per master.

NEEDLE TIP ADEPTER (หัวอัดจารบีแบบปลายแหลม)

For chain saws, universal joints, bicycles, etc. For hand operated grease guns only..



Order No.	Descriptions
05-042	Carded. 10 per master.

NEEDLE TIP ADEPTER (หัวอัดจารบีแบบปลายแหลม)

Dispenses a fine line of grease through needle nose. 3/4" adapter with 1/8" female NPT. Use with extension or hose. 19/32" needle length .046" tip diameter and .219" body diameter. For hand operated grease guns only.



Order No.	Descriptions
05-045	Carded. 10 per master.

หัวอัดจารบี

COUPLERS

for hand operated grease guns only

Standard Coupler (หัวอัดจารบี)

Standard jaw-type coupler features spring-loaded ball check valve. Fits all 1/8" NPT threads. For hand operated lube equipment only. Recommended working pressure is 4,500 PSI. Length 1-7/16", width 5/8".



Order No.	Descriptions
05-031	Carded. 10 per master.
05-028	Same as 05-031. Bulk packages. 10 per master.
05-030	Same as 05-031. Bulk packaged. 100 per master.

Heavy Duty Coupler (หัวอัดจารบีแบบใช้งานหนัก)

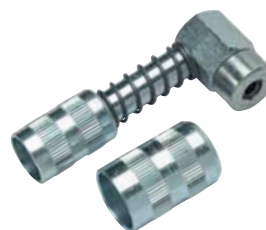
For hand operated grease guns only. Recommended working pressure is 6,000 PSI. All Steel construction. Fits all 1/8" NPT threads. Four jaws. Length 1-1/2", width 3/4".



Order No.	Descriptions
05-035	Carded. 10 per master.
05-034	Bulk packaged. 10 per master.

90° Grease Coupler Adapter (หัวอัดจารบีแบบ 90°)

For hard-to-reach grease fittings on cars, trucks and equipment. Ideal for lubrication of late model front wheel drive vehicles. Complete with both small and large sleeves to fit all standard couplers. For hand operated grease guns only. Recommended working pressure is 4,500 PSI.



Order No.	Descriptions
05-059	Carded. 5 per master.

90° Special Angle Coupler (หัวอัดจารบีแบบ 90°)

Designed for hard to reach grease fittings, this 90° coupler with hex head greases fittings in confined spaces. 1/8"-27 NPTF. Recommended working pressure is 1,000 psi.



Order No.	Descriptions
05-058	Carded. 10 per master.

Hammer
ต้อน

Pipe & Plumbing
Tools
เครื่องมือสำหรับงานท่อ

Cutting
เครื่องมือตัด

Construction
เครื่องมือสำหรับ
งานก่อสร้าง

1000 V
1000 โวลท์

1000 V NON SPARKING
1000 โวลท์ /
กันประกายไฟ

ANTI-DROP TOOLS
เครื่องมือทางพร้อม
อุปกรณ์กันตก

Non-Sparking
เครื่องมือทาง
ป้องกันประกายไฟ

Non-Magnetic Titanium
เครื่องมือทางไทเทเนียม
ไม่เหนียวแม่เหล็ก

Grease Gun
กระบอกอัดจารบี

Roller & Jacks
ล้อเลื่อนยกของ
แม่แรง

GREASE GUN

กระบอกอัดจารบี



หัวอัดจารบี

ADAPTERS, NEEDLES & DISPENSERS

PROFESSIONAL NARROW NEEDLE NOSE DISPENSER

(หัวอัดจารบีแบบปลายแหลม)

Hardened steel tip and 1-1/2" length dispenses a fine line of grease. Ideal for hard-to-reach job. .046" tip diameter and .156" body diameter. For hand operated grease guns only. 1/8" NPT female.



Order No.	Descriptions
05-019	Carded. 10 per master.

4" NEEDLE NOSE ADAPTER (หัวอัดจารบีแบบปลายแหลมยาว 4")

Perfect for use on trucks, vans and RVs. For converting jaw-type lube couplers to steel needle point. Dispenses fine line of grease through the needle nose. Includes both small and large sleeves to fit all standard couplers. Overall length 7-1/8", tip diameter .046" body diameter .250". For hand operated grease guns only.



Order No.	Descriptions
05-025	Carded. 10 per master.

GREASE GUN ACCESSORIES

AIR BLEEDER VALVE

Quickly vents air pockets in grease guns. Zinc-plated, easy to use. 1/8" NPT male fitting.



Order No.	Descriptions
05-039	Carded. 10 per master.

GREASE GUN LOADER FITTINGS

Use in grease gun heads for bulk loading. Zinc-plated. 1/8" NPT male fitting.



Order No.	Descriptions
05-047	0.596" OD (Plews/LubriMatic®). Carded. 10 per master.

ปั๊มสูบน้ำมันแบบมือดึง

PULL-UP BARREL PUMPS

Feature die-cast head with garden hose threads and 18 gauge steel cylinder. includes curved metal spout adapter.

Order No.	Descriptions
55-017	Fits 30-55 gallon drum. Individually boxed.

ปั๊มสูบน้ำมันแบบโยก

LEVER OPERATED BARREL PUMPS

Heavy Duty Barrel Pump

2-Piece telescoping suction tube fits 30 to 55 gallon drums. Dispenses approximately 10 oz. per stroke. With bung adapter, all steel foot valve and piston valve. Spout OD 3/4".

Order No.	Descriptions
55-123	With standard garden hose thread discharge spout.

Replacement Parts (not shown):

Order No.	Descriptions
55-123-03	Bung nut for 55-123

Professional Barrel Pump

Lever style barrel pump with non-drip spout. Equipped with brass rings and a floating piston design. Self-adjusting telescoping suction tube. Designed to pump all lubrication-based fluids, antifreeze, agricultural and industrial non-corrosive fluids. Dispenses approximately 10 oz. per stroke. Fits 30-55 gallon drum. 5 per master.

Order No.	Descriptions
55-124	With standard lever handle.
55-125	With multidirectional handle.

Replacement Parts (not shown):

Order No.	Descriptions
99118	Spout, O-ring and non-drip end.
99119	Bung.
99122	Spout, standard.



55-017

55-123

55-124
55-125