

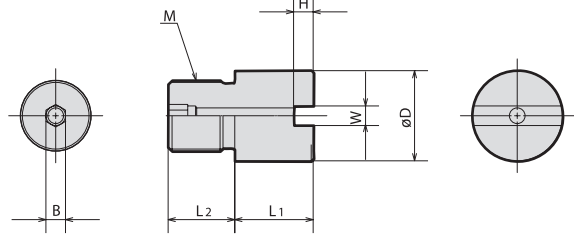
# ARBOR'S ACCESSORIES

อุปกรณ์เสริม



สกรู

## ADJUST SCREW (For BT•BBT shank standard MICRON CHUCK)

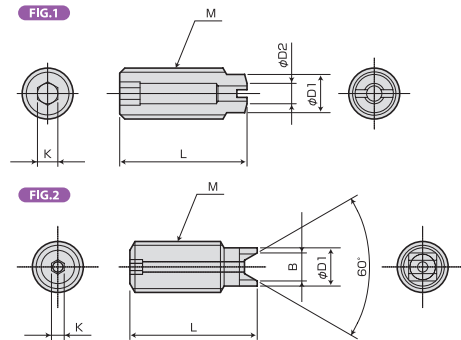


	Order No.	ØD3	M	L1	L2	W	H	B	Micron Chuck
Versatile Tool	<b>HAS1620-05</b>			5					HPC16
	<b>HAS1620-15</b>	15	M10x1.0	15	14	5	3.5	5	HPC20
	<b>HAS1620-25</b>			25					
Cutting Tool	<b>HAS2532-10</b>			10					HPC25
	<b>HAS2532-20</b>	23	M18x1.0	20	17	5	5	5	HPC32
Accessories	<b>HAS2532-35</b>			35					HPC32
	<b>HAS4250-10</b>			10					HPC42
Drill Chuck	<b>HAS4250-20</b>	33	M18x1.0	20	17	5	5	5	HPC50
	<b>HAS4250-35</b>			35					HPC50

NOTE : 1. The above Adjust Screw are sold separately.  
2. Above Adjust Screw can not be used for HSK shank tool. Adjust Screws for HSK shank chuck are manufactured to order.

สกรูปรับ (สำหรับ SLIM CHUCK)

## ADJUST SCREW (For SLIM CHUCK, COLLET CHUCK)

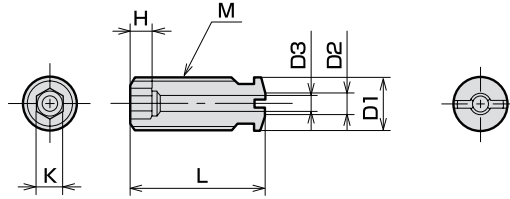


	Order No.	FIG	M	L	D1	D2	K	B	HOLDER
Point Finder	<b>M6x20L-CTW (note1)</b>	1	M6x1.0	20	4.5	3	3	-	SSC07 RSC07
	<b>RAS10-25-2.5 (note2)</b>	2	M10x1.5	25	7.5	-	2.5	5.5	SSC10 RSC10
Tool Setter	<b>RAS13-25-2.5 (note2)</b>		M12x1.5		9.5			7.2	SSC13 RSC13
	<b>RAS16-25-5 (note2)</b>	2	M18x1.5	25	13.5	-	5	9.5	- RSC16
	<b>RAS20-25-5 (note2)</b>		M24x1.5		17.5				- RSC20

(Note 1) of less than 3 drill, in order to enter the coolant hole, can not be for your use for the projected adjustment. CTW is not in the two-piece shape.  
(Note 2) of less than 2 drill, in order to enter the coolant hole, can not be for your use for the projected adjustment.

สกรูปรับ สำหรับรุ่น H และ M

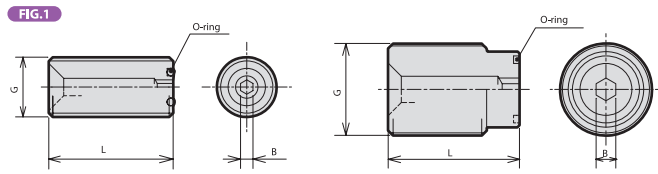
## ADJUST SCREW for MICRON CHUCK H Series, M Series



Order No.	M	L	D1	D2	D3	K	H	Micron Chuck
<b>AS17-2-M5-CTW</b>	<b>17672</b>	M5x0.8	17	5		2.5		HPC06H
<b>AS17-2-M6-CTW</b>	<b>17676</b>	M6x1.0	17	6	3	2	3	HPC07H
<b>AS22-2-M6-CTW</b>	<b>17678</b>		22					HPC08H, HPC08M
<b>AS22-2-M8-CTW</b>	<b>17680</b>	M8x1.25		8	5	4	5	HPC09H, HPC10H
<b>AS25-2-M8-CTW</b>	<b>17682</b>		25					HPC09M, HPC10M, HPC11M ~12M
<b>AS-25-2-M10-CTW</b>	<b>17684</b>	M10x1.5	25	10	6	5	6	HPC11H ~ 16H

สกรูปรับ

## ADJUST SCREW for Hard Chuck, New Milling Chuck



Order No.	Fig	G	L	B	O-ring
<b>OR-M10(-25)</b>	1	M10x1.5	25	2.5	S-5
<b>OR-M12(-25)</b>		M12x1.5	25	2.5	S-5
<b>OR-M14(-35)</b>	2	M14x1.5	35	4	P-6
<b>OR-M18(-25)</b>		M18x1.5	25	5	P-9
<b>OR-M18(-35)</b>		M18x1.5	35	5	P-9
<b>OR-M24-25</b>		M24x1.5	25	6	P-9
<b>OR-M24(-35)</b>		M24x1.5	35	6	P-9
<b>OR-M28-25</b>		M28x1.5	25	6	P-16
<b>OR-M28-30</b>	M28x1.5	30	6	P-16	
<b>OR-M28(-40)</b>	M28x1.5	40	6	P-16	
<b>OR-M36-20</b>	M36x1.5	20	6	P-21	
<b>OR-M36(-40)</b>	M36x1.5	40	6	P-21	

### ORDERING EXAMPLE

① **OR**    ② **M10**    ③ **25**

① Name

② G

③ L

BT Series  
รุ่น BT

HKS Series  
รุ่น HSK

ST Series  
รุ่น ST

Versatile Tool

Cutting Tool

Accessories

Drill Chuck

Pull Stub

Straight Collet

Adjust Screw

Chuck Wrench

Spring Collet

Collet

Nose Piece

Nut

Locking Fixture

Point Finder

Tool Setter

Tool Presetter