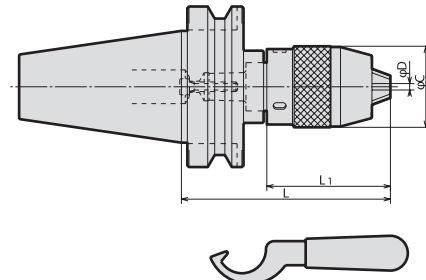


หัวจับดอกสว่าน DRILL CHUCK



FEATURES

- Drill chuck is positively coupled with the holder.
- Short (L length) and compact.
- Clamping force can be increased by the attached wrench.

Order No.	ØD (GRIPPING RANGE)	L		L1		ØC	N/W (kg)
		OPEN	CLOSE	OPEN	CLOSE		
BT30 (BBT30)	-SDC08-080 10036	0.5 ~ 8	83	90.5	50	57.5	0.7
	-SDC13-100 10038	1 ~ 13	99	111.5	66	78.5	1.3
BT40 (BBT40)	-SDC08-080 11148	0.5 ~ 8	83	90.5	50	57.5	1.3
	-SDC13-100 11150	1 ~ 13	99	111.5	66	78.5	1.8
BT50 (BBT50)	-SDC08-100 13291	0.5 ~ 8	103	110.5	50	57.5	37.5
	-SDC13-120 13293		119	131.5			
	-SDC13-160 13294		159	171.5			

NOTE :

1. Each SDC chuck is supplied with a wrench.

ORDERING EXAMPLE

① **BT30** - ② **SDC** ③ **08** - ④ **080**

- ① Shank Size
- ② Holder's Name
- ③ MAX. ØD
- ④ G.L. Length

RUNOUT		
SDC NO.	DIA. of TEST BAR	RUNOUT
SDC08	4 & 8 mm	LESS THAN 0.05mm
SDC13	6.5 & 13 mm	

- 測定位置等の試験方法は、JIS B6001に準拠しております。
- 規格テストバー以外での振れ精度も上記をクリアしております。
- Runout was measured at three times the diameter from chuck nose.

CLAMPING POWER

	CLAMPING	TWISTING MOMENT	Comparison %
Traditional keyless chuck	Manual	6.9 N•m	100
SHOWA SDC CHUCK			
SHOWA SDC CHUCK	With wrench	21.6 N•m	314

NOTE : Twisting moment was measured with a Ø9mm test bar.

BT Series

รุ่น BT

HKS Series

รุ่น HSK

ST Series

รุ่น ST

Versatile Tool

Cutting Tool

Accessories

Drill Chuck

Milling Chuck

Hard Chuck

Collet Chuck

Drill Chuck

Hy-Dual Chuck

Tap Chuck

Boring Chuck

Side Lock Chuck

Morse Taper Holder

Face Mill Arbor

Shell Mill Arbor

Side Cutter Arbor

Traction Drive Speed
Accelerator

Oil-Hole Adapter

Angle Head Holder