



MERLIN FAMILY



... intuitive and user friendly solutions....

The Merlin family, specifically designed for measuring applications in the shop floor environment, has defined an entirely new generation of Gauge Computers, based on the concept of an intuitive and user friendly interface with basic statistical analysis.

PRODUCT FEATURES

Merlin™, Merlin Plus™ and Merlin Plus Box™ share the capability of:

- collecting data from a wide range of measurement devices, made by Marposs or third-parties, via USB, RS232, Ethernet or Bluetooth;
- multiple measurement display with numeric and graphic layout;
- choosing between a wide number of predefined I/O layouts;
- data traceability;
- multi-language support for European and Asian languages;
- managing batches, data segregations, part counters and data storage in QDAS® (DFQ) or CSV format (on internal memory, USB memory devices or remote through Ethernet LAN);
- multi-user password-protected management.
- statistical analysis with graphic display and numeric summary;
- providing Gage Capability and R&R studies facilities;



Merlin™ comes with the Merlin software and offers data collection and basic statistical analysis from traditional or wireless measuring devices. It has been designed for simple measuring applications up to 16 measurements and is available with Microsoft® Windows® CE7 operating system.



Merlin Plus™ comes with the Merlin Plus software and has been designed for enterprise applications up to 250 measurements, adding printing capabilities and dynamic acquisition management. It is available with Microsoft® Windows® 7P operating system to best fit network connectivity.



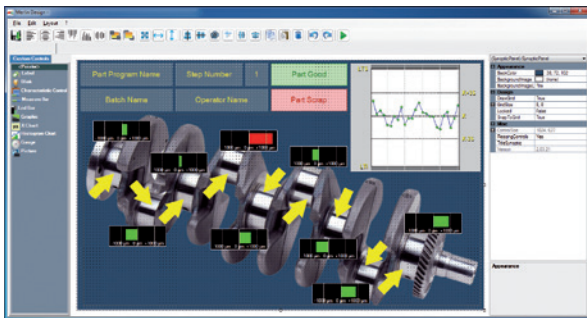
Merlin Plus Box™ comes with the Merlin Plus software and is provided in a sealed enclosure, specifically designed for the shop floor environment. It is connectable to any external DVI or VGA-compatible display, with or without an integrated touch-screen.

Merlin Plus Software™ adds the possibility of running on customer PC and it is Microsoft® Windows® 7 and Microsoft® Windows® 10 compliant.

TECHNICAL SPECIFICATIONS

| MAIN HARDWARE CHARACTERISTICS | | | |
|-------------------------------|-------------------------------|------------------------------------|---------------------------------|
| | MERLIN | MERLIN PLUS | MERLIN PLUS BOX |
| Case | Plastic | Aluminium | Plastic |
| Protection (front panel) | IP65 | | IP54 |
| Touch screen | 4 wire analog-resistive | 5 wire anti-reflection | External DVI connection |
| LCD Display Type | 8.4" 4:3 SVGA | 12.1" 4:3 XGA True Flat | - |
| Storage media | eMMC 4GB | mSATA 32GB | SATA 2 32GB |
| Ethernet LAN | 10/100 Mbps RJ45 connector | 2 x 10/100/1000Mbps RJ45 connector | |
| USB ports | 4 Host + 1 internal | 5 Host + 1 internal | 6 Host |
| Serial ports | 1xRS232C | | |
| Bench-top support | Reclinable - VESA75 compliant | | Fixed - DIN rail |
| Power supply | 24Vdc (18 ÷ 36Vdc) | | |
| Relative humidity | 5 ÷ 80 % (non-condensing) | | |
| Operating temperature | 0 ÷ 50 °C | | |
| Dimensions LxHxD | 230x180x45 mm (9"x7"x 1.8") | 324x323x200 mm (12.8"x12.7"x 7.9") | 200x185x86 mm (7.9"x7.3"x 3.4") |

PROGRAMMING TOOL



Merlin Plus Designer™ works in association with the Merlin Plus software and is a stand-alone software that allows to create customized measure pages using various objects, such as dedicated measuring bars, images and statistical graphics. Customizing each part program, with a dedicated page, will help to guide the operator through the measurement procedure, avoiding errors and easily keeping the production under control. On the same page, the measurements result, statistical graphs or the next measurement step, can be shown.

HOW TO ORDER

| DESCRIPTION | ORDER CODE |
|--|------------|
| MERLIN with East/Western European operating system | 830MEADD00 |
| MERLIN with Japanese operating system | 830MECDD00 |
| MERLIN with Korean operating system | 830MEEDD00 |
| MERLIN with Chinese operating system | 830MEFDD00 |
| MERLIN PLUS - Windows 7P multi-language | 830MPMEHBO |
| MERLIN PLUS - Windows 10 IoT Embedded multi-language | 830MPMFICO |
| MERLIN PLUS BOX - Windows 7P multi-language | 830MBAAAA0 |
| Merlin Plus Software Kit | CM7000000E |
| Merlin Plus Designer Kit | CM7000001E |

For a full list of address locations, please consult the Marposs official website

D6D01501G0 - Edition 04/2019 - Specifications are subject to modifications © Copyright 2019 MARPOSS S.p.A. (Italy) - All rights reserved.

MARPOSS, logo and Marposs product names/signs mentioned or shown herein are registered trademarks or trademarks of Marposs in the United States and other countries. The rights, if any, of third parties on trademarks or registered trademarks mentioned in the present publication are acknowledged to the respective owners.

Marposs has an integrated system to manage the Company quality, the environment and safety, attested by ISO 9001, ISO 14001 and OHSAS 18001 certifications.

Some models of the product line, or parts of them, may be subject to export restrictions if exported outside the European Union or may be subject to restrictive measures adopted by the competent national, supranational or international authorities.

